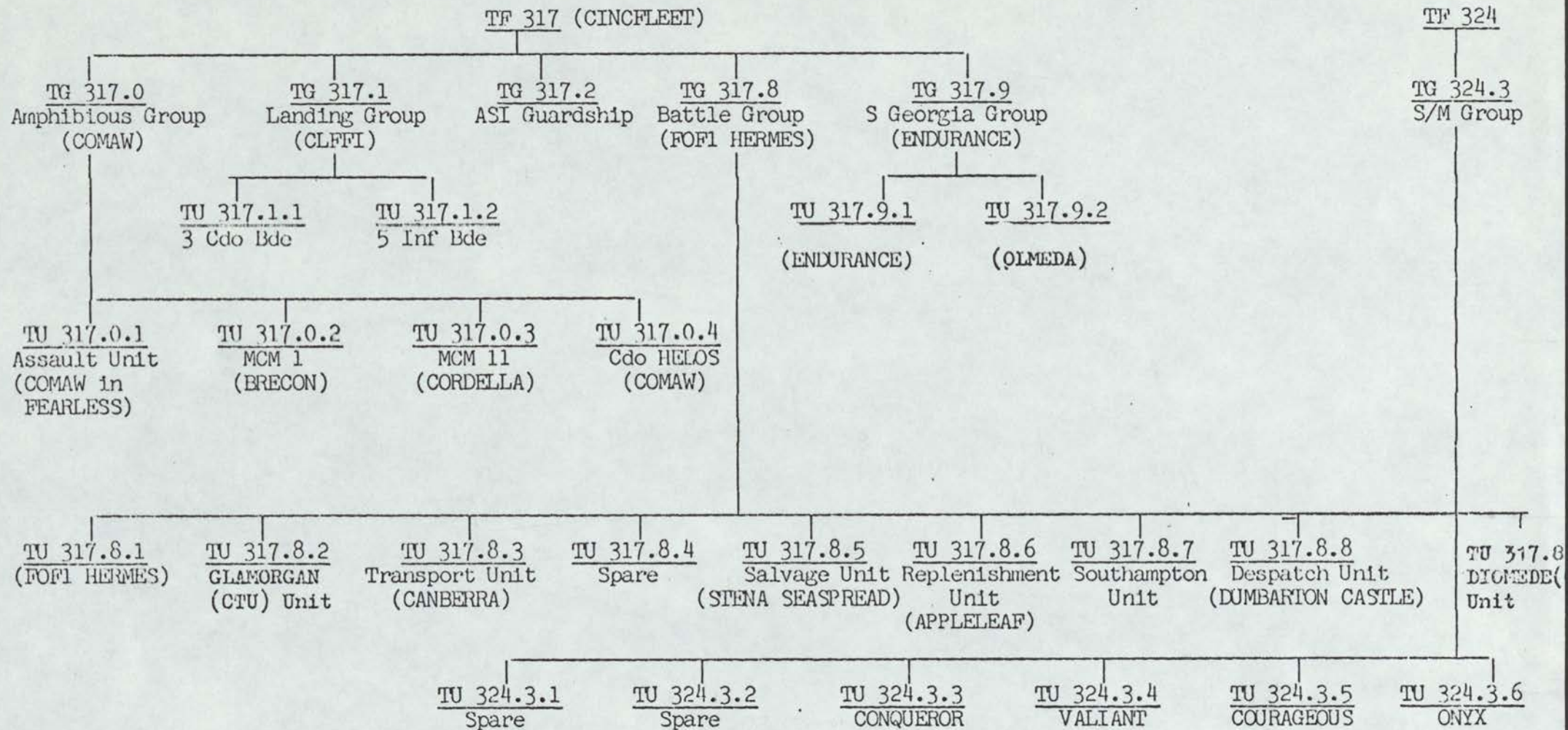
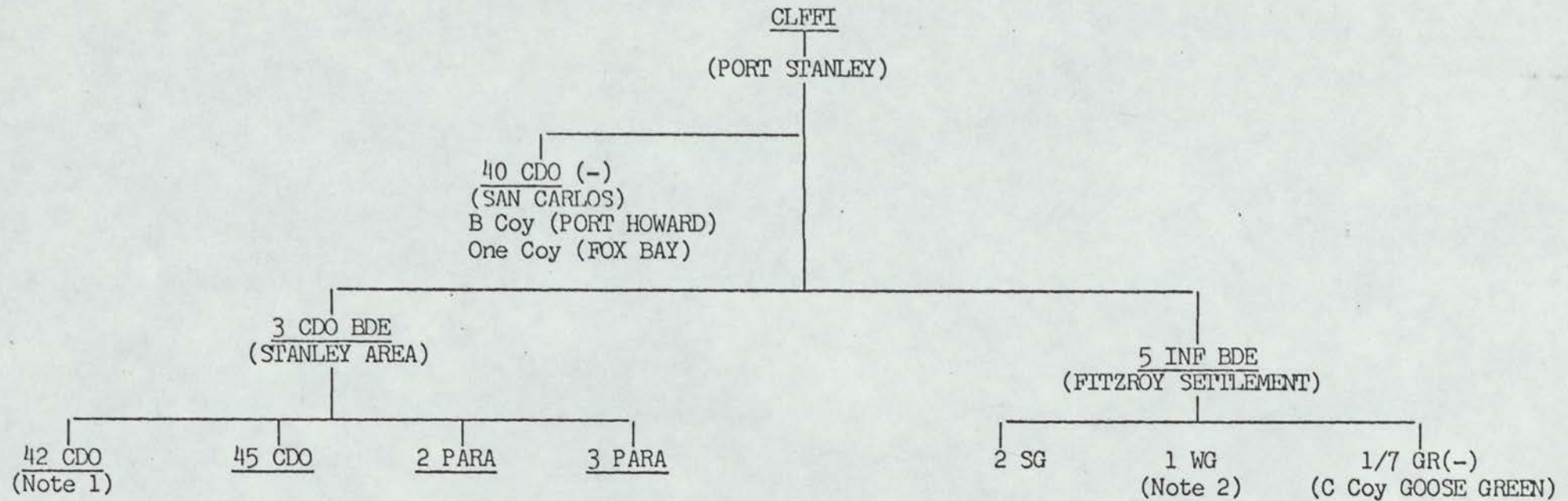


OPERATION CORPORATE - FORCE TOTE AT 220600A JUNE (ISSUE 89)

TASK ORGANISATION SUMMARY (EFFECTIVE 212121 JUNE 1982)

Note:

This Task Organisation does not necessarily reflect the chain of Operational Command delegated for various phases of Op CORPORATE.

LAND FORCES GROUPING (EFFECTIVE 140600Z JUN 82)

NOTE:

1. Elements M COY 42 CDO in ENDURANCE, YARMOUTH and OLMEDA.
2. One Coy in CANBERRA as PW Guards.

(Issue 89)

TF 317
(CTF CINCFLEET)

TG 317.0
(CTG COMAW IN FEARLESS)

TU 317.0.1
(CTU COMAW IN FEARLESS)

HMS FEARLESS)
 HMS INTREPID)
 LSL SIR LANCELOT)
 LSL SIR BEDIVERE) (See Note 1)
 LSL SIR GERAINT)
 ELK)
 LSL SIR PERCIVALE)
 RFA ENGADINE)

TU 317.0.2
(CTU CO OF BRECON)

HMS BRECON)
 HMS LEDEBURY) 240 NW of DAKAR
 RMS ST HELENA) ETA ASI 26/6

TU 317.0.3
(CTU - MCM 11 IN CORDELLA)

HMS CORDELLA)
 HMS PICT)
 HMS JUNELLA) (See Note 1)
 HMS NORTHELLA)
 HMS FARNELLA)

TU 317.0.4
(CTU COMAW IN FEARLESS)

825 NAS
 845 NAS(DET)
 846 NAS
 847 NAS
 848 NAS(DET)

TG 317.1
(CTG-OLFFI)

TU 317.1.1
(CTU COMD 3 CDO BDE RM)

3 CDO BDE

TU 317.1.2
(CTU COMD 5 INF BDE)

5 INF BDE

TG 317.2
HMS LEEDS
CASTLE
(ASI GUARDSHIP)

Note:

- Disposition of units by areas - page 6.

TF 317

TF 324

TG 317.8
(CTG FOFI IN HERMES)

TG 317.9
HMS ENDURANCE (CTG))
HMS ANTRIM (SNO)) SOUTH GEORGIA
YORKSHIREMAN)

TU 317.8.1

FOFI in HERMES (CTU)
HMS HERMES)
HMS BROADSWORD) (See Note 1)
HMS CARDIFF)
HMS ACTIVE)

HMS PENELOPE)
HMS EXETER)
HMS MINERVA)
HMS AVENGER)
HMS AMBUSCADE) (See Note 1)
HMS BRILLIANT)
HMS YARMOUTH ENR S. GEORGIA

TU 317.9.1
HMS ENDURANCE (CTU) THULE
SALVAGEMAN) TIL PM 22/6
OC SAIL S. GEORGIA.

TU 317.9.2

RFA OLMEDA
Passage THULE to SG

HMS BRISTOL ENR 2730S 23W to R/V BRITISH TAMAR 241600Z
HMS INVINCIBLE)
HMS ANDROMEDA) To SMP Area No of 35 S, E of 20 W

TU 317.8.2

HMS CLAMORGAN (CTU) ENR ASI
HMS PLYMOUTH ENR ASI

TU 317.8.3

CANBERRA (CTU) O/C LOADING TROOPS SAIL UK
NORLAND ENR PALKLAND ISLANDS
ATLANTIC CAUSEWAY)
BAL TIC FERRY)
TOR CALEDONIA)
NORDIC FERRY) (See Note 1)
EUROPIC FERRY)
CONTENDER BEZANT)
ST EDMUND)
FORT TORONTO)

TU 317.8.4

HMS ARROW ENR ASI

TU 317.8.5

STENA SEASPREAD (CTU)
TYPHOON) (See Note 1)
IRISHMAN)

TG 324.3

CTU 324.3.1
Spare

CTU 324.3.2
Spare

CTU 324.3.3
HMS CONQUEROR

CTU 324.3.4
HMS VALIANT

CTU 324.3.5
HMS COURAGEOUS

CTU 324.3.6
HMS ONYX

Note:

- Disposition of units by areas - page 6.

(Issue 89)

TU 317.8.6

RFA APPLELEAF (CIU))	1240 nm NE of S GEORGIA
)	R/V INVINCIBLE/ANDROMEDA 221200Z
RFA FORT GRANGE)	
RFA BLUE ROVER)	
RFA OLNA)	
RFA STROMNESS)	(See Note 1)
RFA RESOURCE)	
RFA TIDESPRING)	
RFA BAYLEAF)	
RFA TIDEPOOL)	
RFA REGENT)	S. THEULE
RFA PLUMLEAF)	250 nm N of ASI. R/V RANGATIRA 25/6 ENR GIB
RFA PEARLEAF)	ENR ASI ETA 26 JUN

TU 317.8.7

HMS SOUTHAMPTON (CIU))	
HMS BIRMINGHAM)	
HMS APOLLO)	ETA ASI 27/6
RFA OLWEN)	
HMS BACCHANTE)	ETA GIB 221000Z. GIB GJARD 22-29/6. ASI GUARD 6-23/7

TU 317.8.8

HMS DUMBARTON CASTLE (CIU))	PORT STANLEY
CS IRIS)	280 nm S of ASI. ENR PORT STANLEY
BRITISH ENTERPRISE III)	330 nm N of SG. ETA S GEORGIA 23 JUN.

TU 317.8.9

HMS DIOMEDE (CIU))	PORTSMOUTH ETZ 26/6
HMS LOWESTOFF)	GIB GUARDSHIP 20/6-16/7
HMS DANAE)	PORTSMOUTH ETD 26/6

UNALLOCATED

HMS ARGONAUT)	34 NM S OF CANARIES	ETA DEVONPORT 260800Z
RFA BRAMBLELEAF)		ETA DEVONPORT 240900Z
RFA FORT AUSTIN)	50 NM NW DAKAR	ETA PLYMOUTH 280800Z
HMS ALACRITY)	100 NM W LISBON	ETA DEVONPORT 240900Z
RFA PEARLEAF)	1400 NM SW ASI.	ETA ASI 26 JUN.

Note:

- 1. Disposition of units by areas - page 6.

DISPOSITION OF UNITS BY AREAS

CARRIER BATTLE GROUP (CVBG)	TRANSPORT AREA (TA)	TUG REPAIR AND LOGISTIC AREA (TRALA)	PORT STANLEY	OTHERS
<u>RN FORCES</u> HERMES AMBUSCADE EXETER BRILLIANT <u>RFA</u> STROMNESS TIDESPRING <u>EN ROUTE SMP AREA</u> INVINCIBLE ANDROMEDA ETA 22 JUN	<u>RN FORCES</u> INTREPID CARDIFF ACTIVE FEARLESS BROADSWORD (FOR SMP) <u>RFA/LSL</u> SIR LANCELOT FORT GRANGE ENGADINE BLUE ROVER OLNA <u>STUFT</u> BALTIC FERRY MONSUNEN STENA SEASPREAD GEESTPORT	<u>RN FORCES</u> <u>RFA</u> TIDEPOOL BAYLEAF <u>STUFT</u> ANCO CHARGER SHELL EBURNA	<u>RN FORCES</u> PENELOPE CORDELLA JUNELLA FARNELLA NORTHIELLA PICT DUMBARION CASTLE <u>RFA/LSL/RMA'S</u> SIR BEVIDERE TYPHOON RESOURCE <u>STUFT</u> CALLENRA IRISHMAN CONTENDER BEZANT FORT TORONTO ATLANTIC CAUSEWAY TOR CALEDONIA NORDIC FERRY EUROPIC FERRY ST EDMUND FORREST ELK LYCAON	<u>FOX BAY</u> AVENGER <u>TEAL INLET</u> SIR PERCIVALE <u>FITZROY</u> SIR TRISTRAM SIR GERAIN <u>SG</u> ANTRIM YORKSHIREMAN S. EAGLE W. SEAHORSE <u>S THULE</u> ENDURANCE SALVAGEMAN PEGGY <u>PICKET</u> MINERVA <u>GRANTHAM SOUND</u> UGANDA

OTHER RN SHIPS AND STUFT

<u>CASUALTY FERRIES</u>	<u>TROOP SHIP</u>	<u>STUFT SHIPS COMING FORWARD (MOD OPCON)</u>
HMS HECLA(AGS(H)) EN ROUTE MV ETA MV 251200	RANGATIRA 50 NNW of CAPE FINISTERNE (9,387 GRT) R/V PLUMLEAF 25/6 ETA ASI TBR 28-29/6	<u>STORES SUPPORT SHIP</u>
HMS HYDRA(AGS(H)) ETA PW 23 JUN		MYRMIDON WALLSEND (10,867 GRT) ETA TEESPORT 23/6 ETD UK 2/7
HMS HERALD EN ROUTE MV ETA MV 241200Z	<u>FORWARD SUPPORT SHIP</u>	
<u>HOSPITAL SHIP</u>	LYCAON PORT STANLEY (11,804 GRT)	
UGANDA GRANTHAM SOUND (16,900 GRT)	<u>MOORING TENDER</u>	
<u>STORES SUPPORT SHIP</u>	GOOSANDER ASI	
SAXONIA ETA FREETOWN (8,547 GRT) ETA PORTSMOUTH TBR	WIMPEY SEA HORSE (1599 GRT) SOUTH GEORGIA	
GEEST PORT SAN CARLOS (5,871 GRT)	<u>AMMUNITION SHIP</u>	<u>AIRFIELD RESOURCES STORES SHIP</u>
AVELONA STAR ENR S.G. (9,784 GRT)	KINTERBURY PORTSMOUTH	CEDAR BANK ETD SOUTHAMPTON 23 JUN (7,545 GRT)
<u>FORWARD REPAIR SHIP</u>	LAERTES ENR S GEORGIA (11,804 GRT)	STRATHEWE ETD SOUTHAMPTON 25 JUN (12,598 GRT)
SPENA INSPECTOR ASI (5,814 GRT)	<u>HELICOPTER FERRY</u>	
	ASTRONOMER 1550 nm S of ASI (27,800 GRT) ETA TRALA 27/6	

<u>CONVOY ESCORT OILERS (STERN RAS CAPABILITY FOR RN SHIPS)</u>		<u>AUXILIARY SUPPORT TANKERS (BEAM RAS CAPABILITY FOR RFAs ONLY)</u>		<u>BASE STORAGE TANKER</u>
BRITISH TAMAR (15,640 GRT)	MOTORWAY TANKER S of ASI R/V BRISTOL 241600Z	BRITISH TAY (15,650 GRT)	DEVONPORT	ALVEGA (33,329 GRT)
BRITISH ESK (15,640 GRT)	180 nm NW DAKAR ETA ASI 26 JUN	BRITISH DART (15,650)	300 nm SW OF FREETWON ETA UK 10/7	ASI BASE TANKER
		BRITISH TRENT (15,650 GRT)	350 nm S of ASI ETA ASI 230700Z JUN	
		BRITISH TEST (15,650 GRT)	420 nm S of ASI ETA ASI 231600Z JUN	
		BRITISH WYE (15,650 GRT)	ENR UK	
		BRITISH AVON (15,540 GRT)	350 nm W of FREETOWN ETA ASI 25 JUN	
		SHELL EBURNA (19,700 GRT)	TRALA	
		ANCO CHARGER (15,568 GRT)	TRALA	
<u>MISC</u>		SCOTTISH EAGLE (32,995 GRT)	S GEORGIA	
GC 83	DARWIN	BALDER LONDON (19,497 GRT)	RAS AREA	
		G A WALKER (18,744 GRT)	80 nm N of ASI ETA ASI 221130Z JUN	

ARMY DEPLOYMENTS

FORCE	POINT OF DEPARTURE AND DATE	NTM/ETD	ETA		REMARKS
			Ascension	Falkland	
3 x Air Despatch dets	UK (LYNEHAM)	48 Hrs			
Airfield Construction	UK (MAIDSTONE/ PERHAM DOWN)		FREETOWN 26 JUN		MV RANGITIRA
1 Coy R. Irish	UK (CHESTER)	7 days			
2 Fd Hosp	UK (ALDERSHOT)		FREETOWN 26 JUN		MV RANGITIRA
Additional Log	UK		FREETOWN 26 JUN		MV RANGITIRA
1 Coy RRW	UK (ALDERSHOT)	7 days			1 R Hants from 22 Jun
Movement Control Detachment	UK		FREETOWN 26 JUN		MV RANGITIRA
Rear Link Det 30 Sigs Regt	UK (BLANDFORD)		FREETOWN 26 JUN		MV RANGITIRA
Inf Bn Gp 1 Q O HLDERS	UK (TIDWORTH) (LARKHILL) (COLCHESTER) BAOR(DORTMUND)	5 days			
Crypto Team	UK (BLANDFORD)		FREETOWN 26 JUN		MV RANGITIRA

SECRET
(Issue 89)

AIRCRAFT DEPLOYMENTS - TASK AREAS AND IN TRANSIT FROM UK

TYPE	TOTAL IN TASK AREAS	LOSSES		ADDL IN TRANSIT FROM UK	REMARKS
		ACCIDENT	ENEMY ACTION		
SEA HARRIER	22	4	2		
HARRIER GR3	10	1	3		
SEA KING 2&5 ASW	24	2			Some Sea King 2/5 Reroled as CDO
SEA KING 2&4 CDO	21	3			
WESSEX 3 ASW	1		1		
WESSEX 5 CDO/HDS	38	2	6	6 ASTRONOMER	
LYNX GP	16		3		
CHINOOK	6		3	2 ASTRONOMER	Incl One Captured FIs
GAZELLE UT	13	2	2		
WASP GP	10				
SCOUT GP	11		1	3 ASTRONOMER	
BELL?	2				Captured FIs

(Issue 89)

1. AIRCRAFT DEPLOYMENTS ASI

TYPE	LOCATION	DESTINATION	REMARKS
3 x NIM Mk 2 (AAR)	ASI	-	
5 x HERC Mk 1 (LR)	ASI	-	
15 x VICTOR K2	ASI	-	
3 x PHANTOM PGR 2	ASI	-	
1 x SEA KING 3 (SAR) 2 x WESSEX V 1 x CHINOOK	ASI	-	

2. PLANNED ATF FLIGHTS

DATE	NOS AND TYPE	DESTINATION	REMARKS
22 Jun	3 x HERC 2 x VC10	ASI ASI	} 55 PAX and general freight, mail and detergent.

3. NUMBERS OF PERSONNEL AT ASCENSION ISLAND

PERMANENT	TRANSIENT	TOTAL
913	122	1035

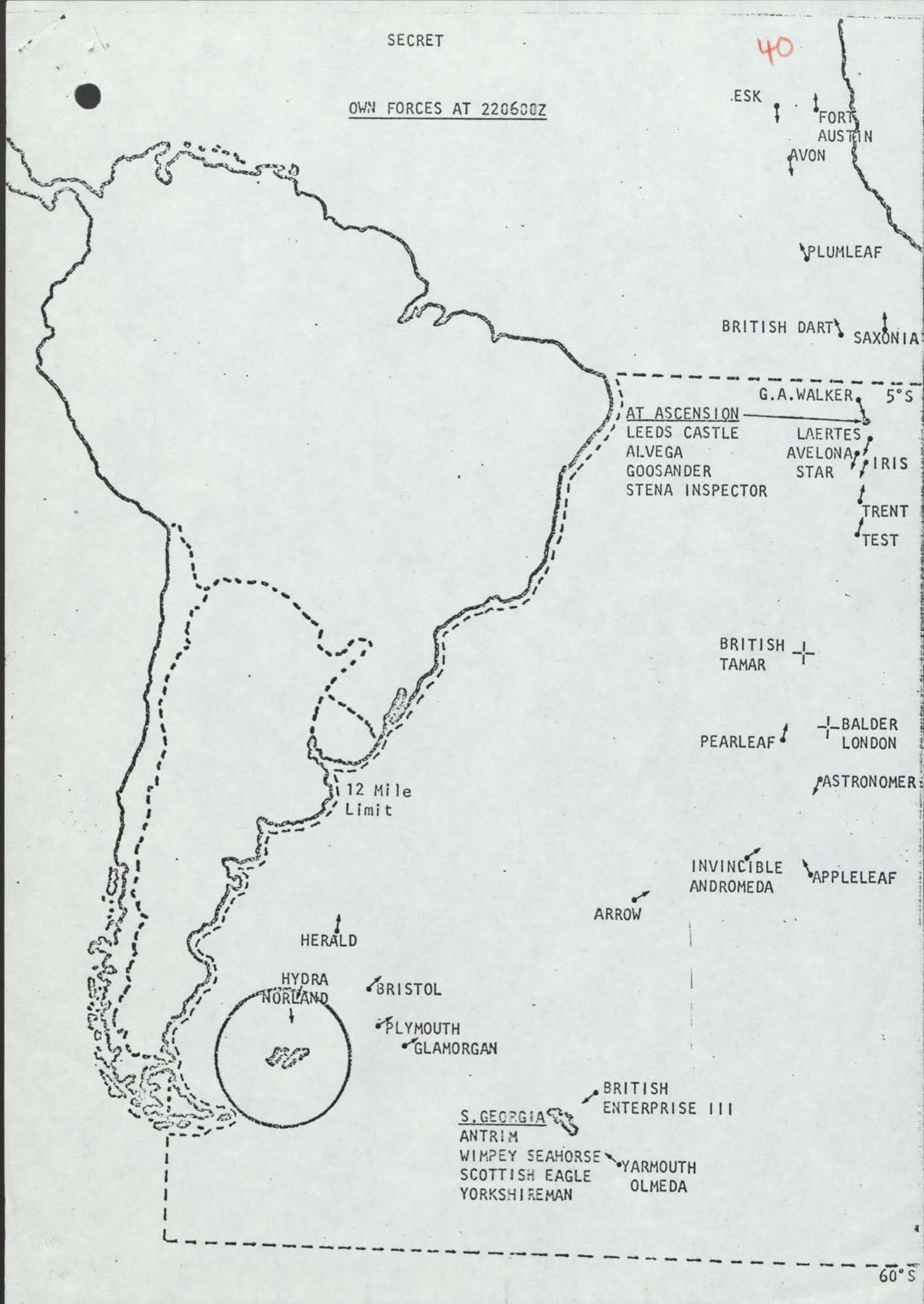
SECRET

(Issue 85)

<u>Distribution:</u>	<u>Copy No</u>
PSO/CDS	1 - 2
Sec/CNS	3
MA/CGS	4
PS/CAS	5
PS/S of S	6
PS/PUS	7
VCDS(P&L)	8 - 9
DCDS(I)	10
DUS(P)	11
ACDS(Ops)	12
ACNS(O)	13 - 15
DMO	16 - 18
ACAS(Ops)	19 - 21
ACDS(Pol)	22 - 23
ACDS(S)	24
DS Int	25
SCPL	26
Director DOMS	27
DMPS	28
AUS (D Staff)	29
DS 5	30
DS 11	31
DCPR	32
FCO (Emergency Unit)	33
Cabinet Office	34
COSSEC	35 - 39
DORS	40
DSC(COORD)	41
DICLO	42
NAVY OPS	43 - 76

40

OWN FORCES AT 220600Z



49

TA

- INTREPID
- CARDIFF
- ACTIVE
- FEARLESS
- BROADSWORD
- SIR LANCELOT
- FORT GRANGE
- ENGADINE
- BLUE ROVER
- OLNA
- BALTIC FERRY
- MONSUNEN
- STENA SEASPREAD
- GEESTPORT

CVBG

- HERMES
- AMBUSCADE
- EXETER
- BRILLIANT
- STROMNESS
- TIDESPING

50

TRALA

- TIDEPPOOL
- BAYLEAF
- SHELL EBURNA

51

GRANTHAM SOUND

UGANDA

TEAL INLET

SIR PERCIVALE

PORT STANLEY

- PENELOPE
- CORDELLA
- JUNELLA
- FARNELLA
- NORTHELLA
- PICT
- DUNBARTON CASTLE
- SIR BEDIVERE
- TYPHOON
- RESOURCE
- CANBERRA
- IRISHMAN
- CONTENDER BEZANT
- FORT TORONTO
- ATLANTIC CAUSEWAY
- TOR CALEDONIA
- NORDIC FERRY
- EUROPIC FERRY
- ST EDMUND
- FOREST
- ELK
- LYCAON

52

FOX BAY

AVENGER

FITZROY

SIR TRISTRAM
SIR GERAINT

60

55

SECRET

FALKLANDS COSTS

	<u>82/83</u>	<u>83/84</u>	<u>84/85</u>	<u>85/86</u>	<u>86/87</u>	<u>87/88</u>	<u>88/89</u>	<u>89/90</u>	<u>90/91</u>	<u>91/92</u>	<u>TOTAL</u>	<u>(NOTES)</u>
1. <u>Assessed as at 4 June</u>												
a) Replacement of capital items												
(i) 4 Type 22s	13	58	105	112	116	80	25	9	2		520	(1)
(ii) 7 Sea Harriers	7	25	15	3							50	
(iii) 5 Sea Kings	4	9	2								15	
(iv) 3 Lynx		3	5	1							9	
(v) 5 Gazelles		1	1	1							3	
(vi) 3 Harrier GR5s						2	6	10	8	1	27	
(vii) 3 Chinooks		5	9	7							21	
(viii) Miscellaneous (vehicles, radios, satellite commu- nications terminals, etc)	3	2	2	2	3						12	
b) Replenishment of stocks (weapons, ammo, stores, etc)	50	68	19	3				1			141	
c) Running costs (fuel, ship charters, etc)	177										177	(2)
d) Equipment specially acquired (avionics, airfield matting, merchant ship equipment, etc)	143										143	(3)
e) Retention of INVINCIBLE (loss of receipts and running costs) to allow 2 CVS to be in-service and one in refit/reserve	50	70	80	25	25	25	25	25	25	25	375	

SECRET

	82/83	83/84	84/85	85/86	86/87	87/88	88/89	89/90	90/91	91/92	TOTAL	(NOTES)
2. <u>Still to be assessed</u>												
a. Future protection of the Islands												(4)
b. Merchant shipping: conversion, reconversion and repair												
c. Delaying dockyard run-down												
d. Modifying personnel plans												
e. Loss of sales and other receipts												
f. Costs as at a-d arising after 4 June												
g. Compensation to ship-owners for loss of trade												
h. Any other costs at present unforeseen												
INTERIM TOTAL	447	241	238	154	144	107	56	45	35	26	1493	(5)
3. <u>Not falling on MOD Votes</u>												
j. Compensation for loss of ATLANTIC CONVEYOR												

SECRET

NOTES

1. Replacing 2 Type 21 and 2 Type 42:
2. Additional to normal usage
3. A substantial proportion of this was acquired from the USA
4. Could be substantial
5. This interim total is subject to adjustment once the final estimate is available.
The £500M approximate estimate for 1982/83 quoted in the body of the paper includes all the costs at serials 1(a) to (e) together with an allowance for costs after 4 June.

SECRET

OPERATION CORPORATEMAP KEY - OWN FORCESTU 317.0.1

HMS FEARLESS (CTU)
 HMS INTREPID
 LSL SIR LANCELOT
 LSL SIR GERAIN
 LSL SIR PERCIVALE
 LSL SIR BEDIVERE
 ELK
 RFA ENGADINE

TU 317.0.2

HMS BRECON (CTU)
 HMS LEDBURY
 RMS ST HELENA

TU 317.0.3

HMS CORDELLA (CTU)
 HMS NORTHELLA
 HMS FARNELLA
 HMS JUNELLA
 HMS PICT

TU 317.2

HMS LEEDS CASTLE

TU 317.8.1

HMS HERMES (CTU)
 HMS YARMOUTH
 HMS BROADSWORD
 HMS INVINCIBLE
 HMS EXETER
 HMS BRISTOL
 HMS BRILLIANT
 HMS AVENGER
 HMS ANDROMEDA
 HMS CARDIFF
 HMS PENELOPE
 HMS MINERVA
 HMS ACTIVE
 HMS AMBUSCADE
 824 SQN A FLT (OLMEDA)
 824 SQN B FLT (OLNA)
 824 SQN C FLT (FORT GRANGE)

TU 317.8.2

HMS GLAMORGAN (CTU)
 HMS PLYMOUTH

TU 317.8.3

CANBERRA (CTU)
 NORLAND
 EUROPIC FERRY
 BALTIC FERRY
 NORDIC FERRY
 ATLANTIC CAUSEWAY
 FORT TORONTO
 CONTENDER BEZANT
 ST EDMUND
 TOR CALEDONIA

TU 317.8.5

STENA SEASPREAD (CTU)
 TYPHOON
 IRISHMAN

TU 317.8.6

RFA APPLELEAF (CTU)
 RFA OLNA
 RFA OLMEDA
 RFA REGENT
 RFA BLUE ROVER
 RFA RESOURCE
 RFA FORT GRANGE
 RFA STROMNESS
 RFA TIDESPRING
 RFA PEARLEAF
 RFA PLUMLEAF
 RFA TIDEPPOOL
 RFA BAYLEAF

TU 317.8.7

HMS SOUTHAMPTON (CTU)
 HMS BIRMINGHAM
 HMS APOLLO
 HMS BACCHANTE

TU 317.8.8

HMS DUMBARTON CASTLE (CTU)
 CS ISRIS
 BRITISH ENTERPRISE III

TU 317.8.9

HMS DIOMEDE (CTU)
 HMS DANAE
 HMS LOWESTOFT