

PAD

4

PRIME MINISTER

19 February 1987

DRUGS

We have now had the first figures (still interim) for drug seizures for 1986. Although heroin is down little can be read into it. The general trend for seizures, particularly amphetamines, is up. This partly reflects the fact that regional crime squads are now in place.

I attach (1) the figures 1982-1986

(2) the seizures in graph profile

(no kg figures for LSD but all indications are that LSD was noticeably up last year).



HARTLEY BOOTH



B

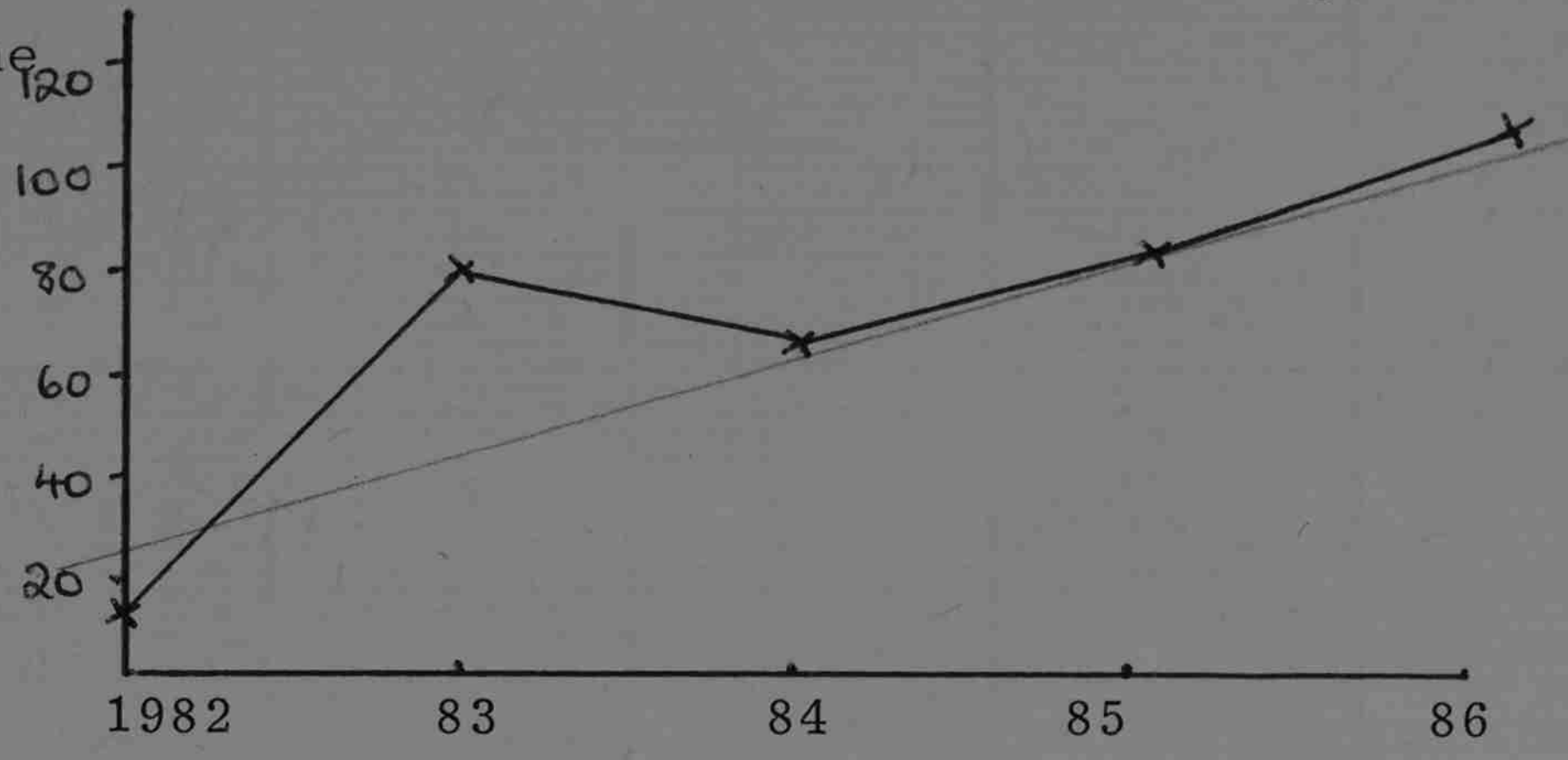
Quantity of controlled drugs seized in the UK by drug type (in kilogrammes)

	<u>1982</u>	<u>1983</u>	<u>1984</u>	<u>1985</u>	<u>1986*</u>
Cocaine	18.8	80.0	65.5	85.4	110.8
Heroin	195.5	236.2	361.6	366.4	228.5
LSD	0.091	0.024	0.210	0.010	n/a
Amphetamine	12.5	34.9	58.1	73.9	92.2
Cannabis resin	4413.0	6816.5	11293.5	7861.2	12757.7
Cannabis (herbal)	12,995.5	13,734.6	17,723.1	14,281.8	11,439.9
Total Cannabis	17,408.5	20,551.1	19,016.6	22,143.0	24,197.6

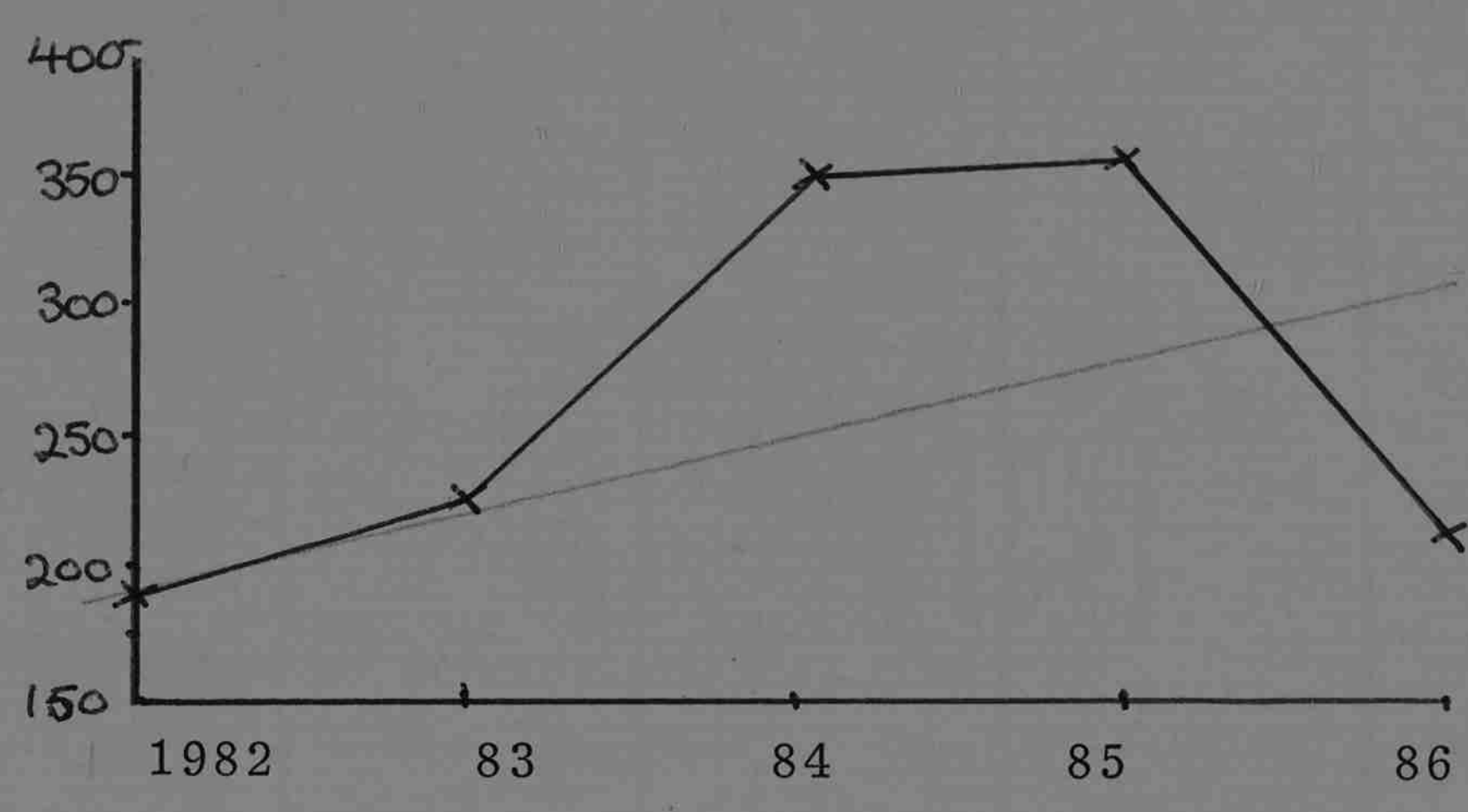
*These are interim prepublication figures

UK DRUG SEIZURES (kg)

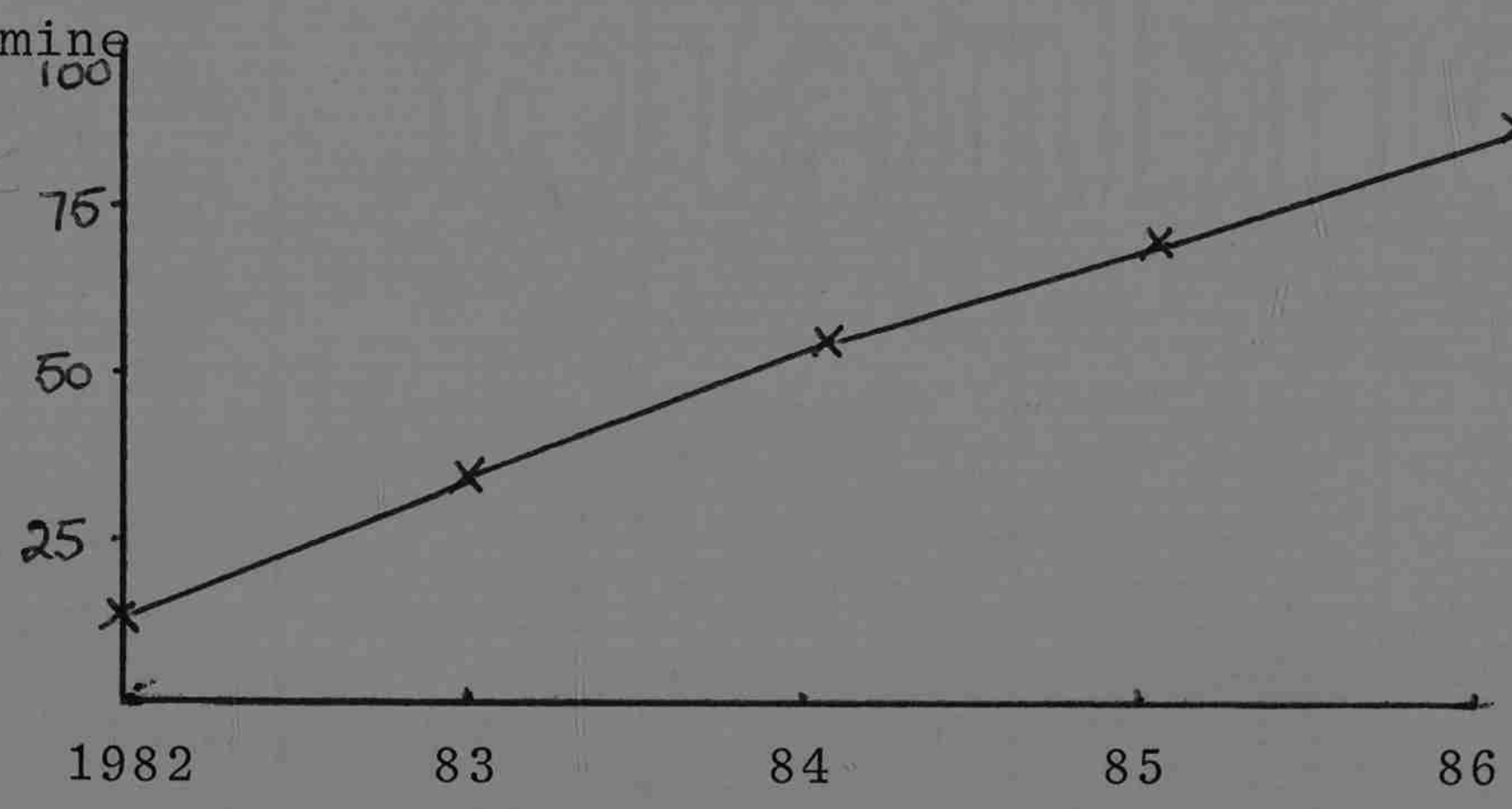
1 Cocaine



2 Heroin



3 Amphetamine



4 Cannabis

