

CONFIDENTIAL

070
THE RT HON JOHN WAKEHAM MP



Department of Energy
1 Palace Street
London SW1E 5HE
01 238 3149

P R C Gray Esq
Private Secretary to the
Prime Minister
10 Downing Street
LONDON
SW1A 2AA

CCP/PT
17 January 1990

Dear Paul

COAL AND POWER STATION STATISTICS

We have been discussing with the electricity industry the provision of statistics following privatisation, examining with them ways of bringing their reporting requirements into line with those of other private sector companies. As a result we have been looking closely at our general statistical requirements to ensure that the information we collect from the industry is actually needed by Government. In this context we have considered the detailed set of returns we receive from the existing electricity generating companies of weekly records of fuel consumption, stock levels and the amount of electricity supplied from power stations. This data is used to compile the Department's weekly confidential report to Department of Energy ministers on fuel stocks and consumption at power stations, a copy of which you also receive.

Given the different relationship which will exist between the Government and the electricity industry after privatisation it seems to us that it would be very difficult to justify the collection of general weekly statistics especially in the light of the following paragraph. We are therefore proposing to ask for this information on a monthly basis only. The key figures will continue to be published in the Department's monthly bulletin, Energy Trends. If you are agreeable, we would therefore propose to discontinue producing the weekly report after figures up to the week ending 30 December 1989 have been included. As the figures are published in Energy Trends we would not propose to issue a separate statement of monthly data using the format currently used for the weekly reports unless you feel strongly that this would be useful. I should be happy to arrange for you to receive a copy of Energy Trends each month if that would be helpful.

CONFIDENTIAL



Weekly figures for global coal stocks at power stations will however continue to be available as a result of the coal stocking directions we will be issuing to National Power and PowerGen after vesting under Section 34(3) of the Electricity Act. These will require the generators to report their stock levels to the National Grid Company, who will check them against a pre-agreed stocking plan designed to maintain system endurance. Thus figures on coal stocks will continue to be available to Ministers.

Furthermore whilst we believe that it would be difficult to justify asking the electricity industry for the general weekly statistics on a routine basis, we have not ruled out the possibility of these being supplied if the situation warranted it. We would therefore propose warning the electricity industry that the provision of weekly reporting could, in exceptional circumstances, be re-instated.

Please let me know whether you are content with these proposals.

I am copying this to Sonia Phippard in the Cabinet Office who also receives a copy of the weekly report.

*Yours
John*

JOHN NEILSON
Principal Private Secretary

Total Energy (Tables 1 and 2)

Total inland energy consumption, on a primary fuel input basis, in the three months August to October 1989 was 1.7 per cent less than in the corresponding months of 1988. Consumption of natural gas and coal fell by 6.0 per cent and 4.4 per cent respectively. Consumption of petroleum rose by three per cent whilst that of nuclear electricity rose by 0.6 per cent.

The average temperature in the period was nearly one and a half degrees celsius warmer than a year earlier making total consumption on a seasonally adjusted and temperature corrected basis 1.2 per cent higher than a year earlier, with consumption of petroleum 5.0 per cent higher. Consumption of coal and nuclear electricity fell by 1.2 per cent and 0.4 per cent respectively whilst that of natural gas remained virtually unchanged.

Coal (Tables 3 to 6)

Provisional figures for the three months August to October 1989 show that total production was 22.1 million tonnes, 11.1 per cent less than in the corresponding months of 1988, with deep-mined coal at 16.6 million tonnes and opencast at 4.7 million tonnes.

Use of home produced and imported coal was 23.9 million tonnes, 4.4 per cent less than a year earlier. Consumption at power stations was 1.4 per cent lower, whilst consumption at coke ovens remained unchanged. Disposals by collieries and opencast sites to industry fell by 7.9 per cent, and to all other final consumers by 32.3 per cent.

Total stocks of coal at the end of October 1989 were 41.9 million tonnes, 0.5 million tonnes more than at the end of September, and 4.7 million tonnes more than at the end of October 1988. Stocks at power stations increased by 0.7 million tonnes during the month of October to 30.0 million tonnes, whilst stocks at collieries and opencast sites, at 10.1 million tonnes, were 0.3 million tonnes below the level at the end of September.

Petroleum (Tables 7 to 11)

Provisional figures for the three months August to October 1989 show that indigenous crude oil production was 23.9 million tonnes, 5.9 per cent less than a year earlier. The reduction in oil production, compared to a year ago, is now much smaller than in previous months and reflects the recovery in oil production following the Piper Alpha, and other, incidents. Production of natural gas liquids was 1.1 million tonnes.

Total output of petroleum products was 3.1 per cent higher than a year ago, all product categories showing an increased output except burning oil, butane and propane, and gas/diesel oil.

Deliveries of petroleum products for inland consumption were one per cent higher than a year ago. Deliveries of the main transport fuels (Derv fuel, aviation turbine fuel and motor spirit) increased by 9.1 per cent, 6.1 per cent and 2.1 per cent respectively. Deliveries of unleaded petrol in October 1989 represented a provisional 27.5 per cent of total motor spirit deliveries. There were increased deliveries of all other product categories with the exception of burning oil, gas/diesel oil (other than Derv), fuel oil, and butane plus propane.

Gas (Tables 12 and 13)

Provisional data for the three months August to October 1989 show that 2,960 million therms of gas were sent out, 5.9 per cent less than a year ago. 24.9 per cent of natural gas supplied was imported (mainly from Norwegian gas fields), compared with 19.5 per cent a year ago.

Electricity (Tables 14 to 16)

During the three months August to October 1989 0.6 per cent more electricity was supplied by the public supply system than a year earlier. When electricity from other UK sources and abroad is included total electricity available increased by one per cent over the same period. Generation of electricity from fossil-fuel power stations rose by 1.5 per cent, whilst that from nuclear stations fell by 1.8 per cent. Total fuel used, on a coal equivalent basis, was 0.6 per cent higher.

Imports and Exports of fuels and related materials (Table 17)

Provisional figures for the third quarter of 1989 show that total imports of fuels were 3.7 per cent higher in quantity than in the third quarter of 1988 and 20.6 per cent higher in value. Total exports of fuels were 17.9 per cent lower in quantity, but 0.2 per cent higher in value.

In the third quarter of 1989 total imports exceeded exports by 5.1 million tonnes coal equivalent. In value terms there were net imports of £162 million. These figures compare with net exports of 1.8 million tonnes coal equivalent, or £93 million, in the third quarter of 1988.

For the third quarter in succession the UK has been a net energy importer, although we remain a net exporter of crude oil.

Prices**Prices of fuels used by industry in Great Britain (Table 18)**

This table shows small falls in the prices of coal, gas and electricity between quarter two and quarter three 1989. On average, heavy fuel oil prices showed little change but gas oil prices rose slightly.

Fuel price indices (Tables 19 and 20)

This month's issue contains third quarter 1989 data for the industrial sector.

The current price index for all fuels is estimated to have risen by 5 per cent between the third quarters of 1988 and 1989, the index for coal having fallen by three per cent. The index for gas fell by 4 per cent, whilst the index for heavy fuel oil rose by 21 per cent. The Producer Price Index of materials increased by 4 per cent. Hence, the deflated price index for all fuels rose by one per cent over the period. The deflated heavy fuel oil index rose by 16 per cent whilst that for coal fell by 7 per cent. The index for electricity rose by three per cent (before seasonal adjustment) and the index for gas fell by 8 per cent.

Typical retail prices of petroleum products (Table 21)

October 1989 figures for 4 star and unleaded motor spirit both showed a marginal increase compared with September. The price of Derv rose by nearly 1.5p per litre. Prices of both standard burning oil and gas oil continued to show significant increases.

SUBSCRIPTION RENEWALS 1990

This issue of Energy Trends is the last in the current subscription year. Subscribers should have received, with this issue, a letter inviting renewal for 1990, on the reverse of which is a form for that purpose. These forms, with the appropriate payment, should be returned by 19 January 1990. Any subscriber who has not received such a letter should contact the Department at the address shown on the back page.

Figures for the latest periods and the corresponding averages or totals are provisional and are liable to subsequent revision.

The figures have not been adjusted for temperature or seasonal factors except where noted in Table 1. Monthly figures relate to four week periods except where otherwise indicated.

Due to rounding the sum of the constituent items may not equal the totals.

Percentage changes relate to the corresponding period a year ago. These comparisons can be affected by calendar differences.

Total energy

TABLE 1. Inland energy consumption: primary fuel input basis

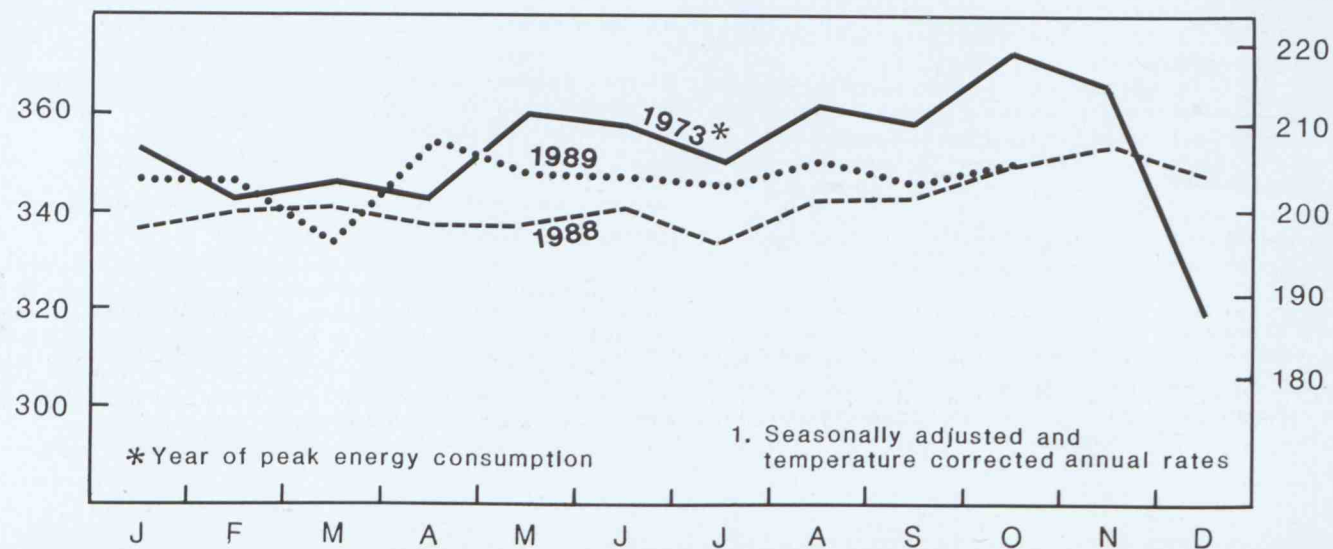
	Primary electricity							Primary electricity						
	Total	Coal ^{1 2}	Petroleum ³	Natural ⁴ gas	Nuclear	Hydro	Net Imports	Total	Coal ^{1 2}	Petroleum ³	Natural ⁴ gas	Nuclear	Hydro	Net Imports
	Million tonnes of coal or coal equivalent							Million tonnes of oil or oil equivalent						
1984	312.2	79.0	135.2	76.5	19.48	2.08	—	183.7	46.5	79.5	45.0	11.46	1.22	—
1985	326.9	105.3	115.0	82.3	22.15	2.12	—	192.3	62.0	67.7	48.4	13.03	1.25	—
1986	335.2	113.5	112.6	83.6	21.34	2.39	1.74	197.2	66.8	66.2	49.2	12.56	1.41	1.02
1987	338.1	116.2	109.3	85.9	19.85	2.09	4.75	198.9	68.3	64.3	50.5	11.67	1.23	2.79
1988	340.1	112.0	116.1	81.5	22.86	2.41	5.24	200.1	65.9	68.3	47.9	13.45	1.42	3.08
Per cent change	+0.6	-3.6	+6.2	-5.1	+15.2	+15.2	+10.2	+0.6	-3.6	+6.2	-5.1	+15.2	+15.2	+10.2
1988 Jan-Oct	272.0	90.1	94.1	62.8	18.42	1.95	4.51	160.0	53.0	55.4	37.0	10.83	1.15	2.65
1989 Jan-Oct p	271.2	86.3	96.1	60.5	21.67	1.95	4.74	159.6	50.8	56.5	35.6	12.75	1.15	2.79
Per cent change	-0.3	-4.2	+2.1	-3.7	+17.6	-0.1	+5.0	-0.3	-4.2	+2.1	-3.7	+17.6	-0.1	+5.0
1988 Aug	20.9	7.0	8.2	3.2	1.91	0.15	0.49	12.3	4.1	4.8	1.9	1.12	0.09	0.29
Sept*	29.2	9.7	11.4	5.1	2.18	0.25	0.53	17.2	5.7	6.7	3.0	1.28	0.15	0.31
Oct	25.6	8.3	9.1	5.7	1.89	0.24	0.42	15.1	4.9	5.3	3.4	1.11	0.14	0.25
Total	75.7	25.0	28.6	14.0	5.98	0.64	1.44	44.5	14.7	16.8	8.3	3.52	0.38	0.85
1989 Aug	20.9	6.8	8.7	3.1	1.71	0.10	0.46	12.3	4.0	5.1	1.8	1.01	0.06	0.27
Sept*	28.4	9.0	11.7	4.6	2.43	0.18	0.51	16.7	5.3	6.9	2.7	1.43	0.10	0.30
Oct p	25.1	8.0	9.1	5.5	1.87	0.18	0.39	14.8	4.7	5.4	3.3	1.10	0.11	0.23
Total	74.4	23.9	29.5	13.2	6.01	0.46	1.36	43.8	14.0	17.3	7.8	3.54	0.27	0.80
Per cent change	-1.7	-4.4	+3.0	-6.0	+0.6	-28.1	-5.4	-1.7	-4.4	+3.0	-6.0	+0.6	-28.1	-5.4
Seasonally adjusted and temperature corrected ⁵ (annual rates) ⁶														
1988 Jan-Oct	341.0	111.3	115.0	84.4	22.38	2.49	5.45	200.6	65.4	67.6	49.6	13.17	1.47	3.21
1989 Jan-Oct p	347.0	108.9	119.2	84.5	26.19	2.48	5.73	204.1	64.0	70.1	49.7	15.41	1.46	3.37
Per cent change	+1.8	-2.2	+3.7	+0.1	+17.0	-0.3	+5.0	+1.8	-2.2	+3.7	+0.1	+17.0	-0.3	+5.0
1988 Aug	342.6	111.0	115.1	82.6	25.20	2.35	6.39	201.6	65.3	67.7	48.6	14.83	1.38	3.76
Sept*	345.5	111.6	115.6	85.2	25.26	2.44	5.46	203.2	65.6	68.0	50.1	14.86	1.44	3.21
Oct	347.1	110.1	116.8	86.3	25.87	2.49	5.47	204.1	64.8	68.7	50.8	15.22	1.47	3.22
Average	345.1	110.9	115.8	84.7	25.44	2.43	5.77	203.0	65.2	68.1	49.8	14.97	1.43	3.40
1989 Aug	351.4	112.9	123.8	83.8	22.43	2.50	5.99	206.7	66.4	72.8	49.3	13.19	1.47	3.52
Sept*	346.3	106.6	120.5	83.2	28.30	2.49	5.28	203.7	62.7	70.9	49.0	16.65	1.47	3.11
Oct p	349.7	109.3	120.6	86.9	25.30	2.48	5.10	205.7	64.3	70.9	51.1	14.89	1.46	3.00
Average	349.2	109.6	121.6	84.7	25.35	2.49	5.45	205.4	64.5	71.5	49.8	14.91	1.47	3.21
Per cent change	+1.2	-1.2	+5.0	-0.1	-0.4	+2.7	-5.5	+1.2	-1.2	+5.0	-0.1	-0.4	+2.7	-5.5

1. Consumption by fuel producers plus disposals (including imports) to final users, plus (for annual figures only) net foreign trade and stock change in other solid fuels. 2. See comments on Statistical Calendar in March 1988 edition. 3. Inland deliveries for energy use plus refinery fuel and losses minus the differences between deliveries and actual consumption at power stations and gas works. 4. Including non-energy use and excluding gas flared or re-injected. 5. Coal, petroleum and natural gas are temperature corrected. 6. For hydro the estimated annual out-turn.

Energy: Total Inland consumption (primary fuel input basis)¹

Million tonnes coal equivalent

Million tonnes oil equivalent



1. Seasonally adjusted and temperature corrected annual rates

TABLE 2. Supply and use of fuels

Million therms

	1987	1988	Per cent change	1987		1988				1989p		Per cent change
				3rd quarter	4th quarter	1st quarter	2nd quarter	3rd quarter	4th quarter	1st quarter	2nd quarter	
PRIMARY FUELS AND EQUIVALENTS												
Production of primary fuels												
Coal	25,085	25,117	+0.1	5,598	6,710	6,054	6,299	5,808	6,956	6,460	6,192	-1.7
Petroleum ²	53,621	49,774	-7.2	13,334	13,777	13,782	12,799	11,640	11,553	10,037	8,650	-32.4
Natural gas ³	17,338	16,692	-3.7	2,409	5,295	5,996	3,040	2,536	5,120	5,653	3,220	+5.9
Primary electricity	5,046	5,813	+15.2	1,105	1,207	1,436	1,282	1,476	1,619	1,912	1,624	+26.7
Total	101,091	97,396	-3.7	22,446	26,989	27,268	23,420	21,460	25,248	24,062	19,686	-15.9
Arrivals, Petroleum ⁴	21,558	22,816	+5.8	5,440	5,773	5,288	5,293	5,673	6,562	6,123	6,220	+17.5
Other	8,414	8,823	+4.9	1,952	2,237	2,508	2,159	1,935	2,221	2,426	2,296	+6.3
Shipments	43,264	39,246	-9.3	10,631	10,858	11,351	9,755	9,047	9,093	7,356	6,636	-32.0
Marine Bunkers	697	767	+10.0	174	151	135	189	239	203	218	248	+31.2
Stock changes ⁵												
Solid fuels	+1,348	-614		-242	+645	+727	-676	-664	-2	-200	-898	
Crude Petroleum	-82	+542		-302	-159	+273	-139	-64	+472	-298	+147	
Petroleum products	+216	-52		-140	+39	+225	-162	+2	-117	+124	+9	
Natural gas	-263	-253		-311	-112	+18	-40	-192	-38	+7	+50	
Non-energy use	4,085	4,355	+6.6	1,086	1,050	1,054	1,147	1,094	1,059	1,052	1,030	-10.2
Statistical difference ⁶	-199	+387		+180	-430	+690	+316	+21	-641	+327	+299	
Total primary energy input ⁷	84,037	84,677	+0.8	17,132	22,917	24,457	19,080	17,791	23,350	23,944	19,895	+4.3
Conversion losses etc. ⁸	25,360	25,206	-1.4	5,508	6,849	6,869	5,723	5,612	7,007	6,994	5,970	+4.3
Final energy consumption ⁹	58,677	59,471	+1.4	11,624	16,068	17,588	13,357	12,179	16,343	16,950	13,925	+4.3
FINAL CONSUMPTION BY USER ⁹												
Iron and steel industry												
Coal	3	5	+66.7	1	1	2	1	1	1	1	1	+33.3
Other solid fuel ¹⁰	1,776	1,900	+7.0	404	444	484	482	453	481	493	448	-6.9
Other coal derived fuels ¹¹	290	273	-5.9	77	72	69	68	68	68	68	67	-1.5
Gas ¹²	468	449	-4.1	95	134	138	109	89	113	124	110e	+0.9e
Electricity	265	278	+4.9	60	71	72	70	65	71	73	72	+2.9
Petroleum	250	330	+32.0	56	66	85	82	72	93	88	98	+19.9
Total	3,052	3,235	+6.0	693	784	850	812	748	827	847	796	-2.0
Other industries												
Coal	2,016	2,063	+2.3	468	545	542	510	450	561	501	529	+3.7
Other solid fuel ¹⁰	92	106	+15.2	28	27	31	18	25	32	15	16	-11.1
Other coal derived fuels ¹¹	36	33	-8.3	8	9	9	10	7	7	8	8	-20.0
Gas ¹²	5,424	4,964	-8.5	1,076	1,472	1,545	1,153	959	1,305	1,398	1,130e	-2.0e
Electricity	2,597	2,729	+5.1	614	682	713	669	642	705	691	671	+0.3
Petroleum	3,392	3,712	+9.4	685	958	1,053	829	755	1,075	1,067	770	-7.1
Total	13,557	13,607	+0.4	2,879	3,693	3,893	3,189	2,838	3,685	3,680	3,124	-2.0
Transport sector												
Coal and other solid fuel	1	—	—	—	—	—	—	—	—	—	—	—
Electricity	105	112	+6.7	24	28	30	27	26	29	29	26	-2.4
Petroleum	16,835	17,890	+6.3	4,455	4,290	4,203	4,443	4,690	4,553	4,383	4,746	+6.8
Total	16,940	18,002	+6.3	4,480	4,318	4,233	4,470	4,716	4,582	4,412	4,773	+6.8
Domestic sector												
Coal	2,060	1,882	-8.6	454	555	506	432	462	483	419	519	+20.1
Other solid fuel ¹⁰	529	479	-9.5	114	126	121	112	126	120	99	117	+3.9
Gas ¹²	10,500	10,255	-2.3	971	3,197	4,096	1,810	1,128	3,220	3,766	1,920e	+6.1e
Electricity	3,182	3,152	-0.9	581	908	975	672	608	897	959	691	+2.7
Petroleum	982	969	-1.2	180	282	299	187	187	297	287	199	+6.7
Total	17,253	16,737	-3.0	2,300	5,068	5,997	3,213	2,511	5,017	5,530	3,446	+7.3
Other final users ¹³												
Coal	371	330	-11.1	57	106	109	75	54	90	86	63	-16.2
Other solid fuel ¹⁰	160	122	-23.8	35	36	37	30	27	27	27	24	-18.3
Gas ¹²	2,991	2,997	-0.2	310	877	1,166	590	349	891	1,072	660e	+11.9e
Electricity	2,371	2,453	+3.5	522	641	677	557	557	662	723	629	+12.9
Petroleum	1,980	1,988	+0.4	348	545	626	421	379	562	575	407	-3.3
Total	7,873	7,890	+0.2	1,272	2,205	2,615	1,673	1,366	2,232	2,483	1,783	+6.6
Total final users	58,677	59,471	+1.4	11,624	16,068	17,588	13,357	12,179	16,343	16,950	13,925	+4.3
FINAL CONSUMPTION BY FUEL ⁹												
Coal	4,451	4,280	-3.8	980	1,207	1,159	1,018	967	1,135	1,007	1,114	+9.4
Other solid fuel ¹⁰	2,557	2,606	+1.9	581	633	673	642	631	660	635	606	-5.6
Other coal derived fuels ¹¹	326	306	-6.1	85	81	78	78	75	75	76	75	-3.8
Gas ¹²	19,383	18,665	-3.7	2,451	5,680	6,947	3,662	2,525	5,529	6,359	3,820e	+4.3e
Electricity	8,520	8,724	+2.4	1,801	2,330	2,467	1,995	1,898	2,364	2,475	2,089	+4.7
Petroleum	23,440	24,890	+6.2	5,724	6,142	6,266	5,962	6,083	6,580	6,398	6,221	+4.3
Total all fuels	58,677	59,471	+1.4	11,624	16,068	17,588	13,357	12,179	16,343	16,950	13,925	+4.3

Coal

TABLE 3. Coal production, foreign trade and deep-mined tonnage lost

	Production						Tonnage lost (deep-mined) ⁵	
	Total ^{1 2}	Deep-mined	Opencast	Net imports	Imports ³	Shipments ⁴	Recognised holidays and rest days	Disputes
1984	51,182	35,243	14,306	+6,601	8,894	2,293	11,083	64,972
1985	94,047	75,224	15,569	+10,300	12,732	2,432	8,741	14,035
1986	108,092	90,358	14,277	+7,877	10,554	2,677	9,643	893
1987	104,435	85,852	15,793	+7,428	9,781	2,353	9,799	1,724
1988	103,785	83,462	17,919	+10,171	11,993	1,822	9,153	3,633
Per cent change	-0.6	-2.8	+13.5		+22.6	-22.6	-6.6	(+)
1988 Jan-Oct	83,996	67,466	14,440	+8,277	9,733	1,457	8,922	3,314
1989 Jan-Oct p	82,086	64,762	15,208	+7,941	9,549	1,609	7,564	444
Per cent change	-2.3	-4.0	+5.3		-1.9	+10.4	-15.2	-86.6
1988 Aug Sept* Oct	6,042	4,652	1,207	+909	1,026	117	2,637	19
	9,843	7,961	1,718	+1,005	1,165	161	1,054	48
	8,954	7,295	1,480	+603	753	150	32	20
Total	24,839	19,908	4,405	+2,516	2,944	428	3,722	87
1989 Aug Sept* Oct p	5,366	4,095	1,195	+600	771	171	1,837	32
	8,919	6,692	1,823	+664	902	239	801	43
	7,792	5,779	1,663	+751	1,005	255	71	21
Total	22,077	16,565	4,682	+2,014	2,679	665	2,709	96
Per cent change	-11.1	-16.8	+6.3		-9.0	+55.4	-27.2	+9.8

1. Includes an estimate for slurry, etc., recovered and disposed of otherwise than by the British Coal Corporation (BCC). 2. See comments on Statistical Calendar in March 1988 edition. 3. As recorded in the Overseas Trade Statistics. 4. Shipments as recorded by BCC; the figures may differ from those published in the Overseas Trade Statistics. 5. BCC only.

TABLE 4. Inland coal use

	Thousand tonnes									
	Fuel producers (consumption)					Final users (disposals by collieries and opencast sites)				
	Total ¹	Primary	Secondary			Industry ⁴	Domestic			Other ⁷
			Collieries	Power stations ²	Coke ovens		Other ³ conversion industries	House coal ^{4 5}	Other ⁶	
1984	77,309	209	53,411	8,246	1,300	6,003	4,844	1,562	1,733	
1985	105,386	332	73,940	11,122	2,176	7,474	6,533	2,102	1,707	
1986	114,234	306	82,652	11,122	1,959	8,170	6,989	1,537	1,500	
1987	115,894	235	86,177	10,859	2,052	7,986	5,685	1,475	1,425	
1988	111,486	196	82,470	10,902	2,006	8,066	5,112	1,469	1,265	
Per cent change	-3.8	-16.8	-4.3	+0.4	-2.2	+1.0	-10.1	-0.4	-11.2	
1988 Jan-Oct	90,111	153	66,456	8,993	1,664	6,478	4,161	1,199	1,007	
1989 Jan-Oct p	86,300	115	64,221	8,948	1,377	6,116	3,569	1,137	817	
Per cent change	-4.2	-24.8	-3.4	-0.5	-17.2	-5.6	-14.2	-5.2	-18.8	
1988 Aug	6,989	8	4,956	814	115	465	434	135	64	
Sept*	9,716	12	7,186	1,039	169	653 ^a	428	148	82	
Oct	8,265	13	6,103	833	149	609	370	99	89	
Total	24,971	32	18,245	2,686	433	1,727	1,232	382	235	
1989 Aug	6,825	6	5,143	811	94	416	212	102	42	
Sept*	9,015	8	6,744	1,036	133	657	271	96	71	
Oct p	8,030	8	6,110	837 ^b	98 ^b	518	315	70	74	
Total	23,870	22	17,997	2,684	325	1,591	798	268	186	
Per cent change	-4.4	-31.1	-1.4	-0.1	-24.9	-7.9	-35.2	-29.9	-21.1	

1. See comments on Statistical Calendar in March 1988 edition. 2. Public supply and railway and transport power stations. 3. Gas works, low temperature carbonisation and patent fuel plants. 4. Includes estimated proportion of total imports. 5. Including miners' coal. 6. Anthracite, dry steam coal and imported naturally smokeless fuels. 7. Includes public administration and commerce. 8. Partly estimated.

TABLE 5. Stocks of coal¹ at end of period: Great Britain

	Thousand tonnes							
	Distributed				Undistributed			
	Total ²	Total distributed stocks	Power stations	Coke ovens	Other	Total undistributed stocks	Collieries	Opencast sites
1984	36,548	15,794	14,402	1,199	193	20,753	10,969	9,784
1985	34,979	25,752	23,942	1,624	186	9,228	5,707	3,520
1986	38,481	29,776	27,983	1,619	175	8,704	5,996	2,708
1987	33,157	27,016	25,292	1,550	173	6,142	4,903	1,239
1988	35,999	28,667	27,004	1,512	150	7,332	5,621	1,710
1988 Aug Sept* Oct	34,574	28,569	26,938	1,498	133	6,005	4,630	1,375
	35,853	29,544	27,925	1,490	129	6,309	4,862	1,447
	37,206	30,417	28,790	1,493	134	6,789	5,261	1,528
1989 Aug Sept* Oct p	40,911	30,262	28,388	1,743	131	10,649	7,626	3,023
	41,422	30,951	29,307	1,522	122	10,472	7,243	3,229
	41,893	31,760	30,048	1,587	125	10,133	6,819	3,315
Absolute change: in latest month on a year ago	+470	+809	+741	+65	+3	-339	-424	+86
	+4,686	+1,342	+1,258	+94	-10	+3,344	+1,557	+1,787

1. Excluding distributed stocks held in merchants' yards, etc., mainly for the domestic market, and stocks held by the industrial sector. 2. See comments on Statistical Calendar in March 1988 edition.

TABLE 6. Colliery manpower and productivity at BCC mines

	Wage earners on colliery books				Absence percentage			Average output per manshift worked ⁴		
	Total ¹	Underground ¹	Recruitment	Wastage	Total	Voluntary ²	Involuntary ³	Overall	Total	Production ⁵
	Thousands	Number	Number	Number	Per cent	Per cent	Per cent	Per cent	Tonnes	Tonnes
1984	174	141	1,511	14,001	7.9	1.5	6.4	2.24	2.77	10.31
1985	148	121	3,649	29,261	10.9	3.1	7.8	2.49	3.12	11.36
1986	119	98	1,401	30,617	10.8	3.6	7.2	3.15	3.92	13.82
1987	102	85	2,514	19,067	10.1 ⁶	3.5	6.6 ⁶	3.59	4.42	15.81
1988	86	72	625	17,061	9.1 ⁶	3.1	6.0 ⁶	3.97	4.85	18.25
Per cent change	-16.1	-15.2	-75.1	-10.5				+10.7	+9.7	+15.4
1988 Jan-Oct	91 ⁷	76 ⁷	407	15,782	9.0	3.1	5.9	3.94	4.82	18.18
1989 Jan-Oct p	76 ⁷	65 ⁷	662	20,297	8.7	3.0	5.7	4.29	5.18	20.28
Per cent change	-16.3	-15.5	+62.7	+28.6				+8.9	+7.4	+11.5
1988 Aug Sept* Oct	88	74	17	324	6.7	2.5	4.2	3.60	4.43	17.42
	87	73	39	529	8.5	3.0	5.4	4.15	5.04	18.59
	87	73	100	347	9.6	3.3	6.3	4.18	5.06	18.77
1989 Aug Sept* Oct p	71	60	64	1,805	7.1	2.5	4.6	3.72	4.53	18.36
	66	56	84	4,582	8.0	3.0	5.0	4.30	5.16	20.32
	66	56	48	184	9.0	3.1	5.8	4.27	5.10	19.79

1. At the end of period. 2. Absence for which no reason has been given (ie excludes absence through industrial disputes). 3. Absence mainly for sickness or injury. 4. Saleable deep-mined revenue coal. 5. Output from production faces divided by production manshifts. 6. From July 1987 the priority given to sickness over holidays when recording the causes of non-deployment has been reversed. This will tend to reduce the calculated absence percentage, particularly during the summer months. 7. Average numbers during the period.

Petroleum

TABLE 7. Indigenous production, refinery receipts, arrivals and shipments¹

	Indigenous production ²			Crude oil ⁴						Petroleum products		
				Refinery receipts			Foreign trade ⁸			Foreign trade ⁸		
	Total	Crude Oil	NGLs ³	Indigenous ⁵	Other ⁶	Net foreign ⁷ arrivals	Arrivals	Shipments		Arrivals	Shipments	Bunkers ¹⁰
								Indigenous	Other ⁹			
	Million tonnes			Thousand tonnes								
1984	126.1	121.3	4.8	45,304	2,196	30,950	32,272	77,270	1,363	23,082	14,234	2,248
1985	127.6	122.4	5.1	43,231	1,095	34,327	35,576	79,335	1,416	13,101	17,038	2,118
1986	127.0	121.2	5.8	38,780	1,006	39,880	41,209	83,341	1,635	11,767	17,726	2,091
1987	123.3	117.6	5.7	38,794	939	40,630	41,541	80,318	1,113	8,570	17,056	1,668
1988	114.4	109.4	5.0	40,582	730	42,613	44,271	69,965	1,967	8,455	17,176	1,831
Per cent change	-7.2	-7.0	-12.3	+4.6	-22.3	+4.9	+6.6	-12.6	+76.8	-1.3	+0.7	+9.8
1988 Jan-Oct	96.8	92.7	4.0	33,910	590	35,303	36,303	59,906	1,249	6,633	14,246	1,532
1989 Jan-Oct p	75.4	71.8	3.6	32,680	703	39,990	40,869	40,225	1,036	6,663	14,401	1,947
Per cent change	-22.1	-22.5	-10.0	-3.6	+19.1	+13.3	+12.6	-32.9	-17.0	+0.4	+1.1	+27.1
1988 Aug	9.0	8.6	0.3	3,479	18	3,800	3,863	5,451	86	799	1,430	199
Sept	8.8	8.4	0.4	3,073	10	3,769	3,912	5,395	155	683	1,413	186
Oct	8.9	8.4	0.5	2,764	-35	4,263	4,456	5,433	218	944	1,372	187
Total	26.6	25.4	1.2	9,315	-7	11,831	12,231	16,279	459	2,425	4,215	571
1989 Aug	8.0	7.7	0.3	3,493	87	4,014	4,130	4,754	115	484	1,562	234
Sept	8.1	7.8	0.3	3,513	56	3,782	3,895	4,291	124	657	1,435	217
Oct p	8.8	8.4	0.4	2,972	40	3,628	3,813	5,119	185	1,092	1,332	174
Total	24.9	23.9	1.1	9,978	183	11,425	11,838	14,164	425	2,233	4,329	626
Per cent change	-6.4	-5.9	-8.3	+7.1	(+)	-3.4	-3.2	-13.0	-7.4	-7.9	+2.7	+9.6

1. Calendar Months. 2. Includes for convenience offshore and land production. 3. Condensates and petroleum gases derived at onshore treatment plants. 4. Includes process (partly refined) oils. 5. Includes condensate for distillation. 6. Mainly recycled products. 7. Arrivals less re-exports. 8. Foreign trade recorded by the Petroleum Industry and may differ from figures published in the Overseas Trade Statistics. 9. Mainly process oils but may include re-exports of crude oil. 10. International marine bunkers.

TABLE 8. Refinery throughput and output of petroleum products¹

	Thousand tonnes													
	Throughput of crude and process oil	Refinery use		Total ² output of petroleum products	Gases		Naphtha (LDF)	Motor spirit	Kerosene		Gas/ diesel oil	Fuel oil	Lubricating oils	Bitumen
		Fuel	Losses/ (Gains)		Butane and propane	Other Petro- leum			Aviation turbine fuel	Burning oil				
1984	79,116	5,350	579	73,187	1,578	78	3,206	22,237	5,352	2,066	21,547	13,071	1,108	1,795
1985	78,431	5,179	348	72,904	1,436	60	2,883	22,254	5,257	2,307	21,702	12,896	1,188	1,764
1986	80,155	5,404	662	74,089	1,328	93	2,652	23,360	5,813	2,147	22,409	12,523	909	1,887
1987	80,449	5,216	577	74,656	1,422	52	2,014	24,680	6,063	2,270	21,424	12,797	886	2,056
1988	85,662	5,484	340	79,837	1,580	68	1,856	26,409	6,725	2,289	23,925	12,495	970	2,295
Per cent change	+6.5	+5.1	-41.1	+6.9	+11.1	+30.8	-7.8	+7.0	+10.9	+0.8	+11.7	-2.4	+9.5	+11.6
1988 Jan-Oct	70,566	4,509	315	65,742	1,327	56	1,487	21,796	5,670	1,773	19,629	10,255	788	1,956
1989 Jan-Oct p	72,426	4,806	419	67,201	1,339	70	1,620	22,724	5,943	1,827	19,022	10,674	891	2,049
Per cent change	+2.6	+6.6	+33.0	+2.2	+0.9	+25.0	+8.9	+4.3	+4.8	+3.0	-3.1	+4.1	+13.1	+4.8
1988 Aug Sept Oct	7,193	456	30	6,707	140	7	170	2,230	646	143	1,897	1,052	91	218
	6,993	451	37	6,504	138	7	165	2,188	580	170	1,846	1,057	76	193
	7,087	419	31	6,636	122	5	165	2,169	572	212	1,990	1,036	79	180
Total	21,273	1,327	99	19,848	400	19	500	6,587	1,797	525	5,733	3,146	246	591
1989 Aug Sept Oct p	7,704	509	19	7,176	171	8	170	2,418	743	126	2,001	1,079	117	224
	7,455	478	92	6,885	131	5	174	2,276	667	171	1,985	1,066	110	196
	6,850	445	12	6,393	89	7	204	2,200	547	187	1,721	1,083	92	195
Total	22,009	1,431	124	20,454	391	20	548	6,894	1,957	484	5,707	3,228	319	615
Per cent change	+3.5	+7.8	+25.3	+3.1	-2.3	+5.3	+9.6	+4.7	+8.9	-7.8	-0.5	+2.6	+29.7	+4.1

TABLE 9. Deliveries of petroleum products for inland consumption¹

Thousand tonnes

	Total ^{2 3}	Butane ⁴ and propane	Naphtha ⁵ (LDF) and Middle Distillate Feedstock	Motor Spirit		Kerosene			Gas/diesel oil		Lubri- cating oils	Bitumen	
				Total	of which Unleaded	Aviation turbine fuel	Burning oil		Derv fuel	Other			
							Premier	Standard Domestic					
1984	81,435	1,948	3,869	20,226	—	4,828	123	1,176	6,755	9,967	27,864	818	1,900
1985	69,781	1,543	3,792	20,403	—	5,007	126	1,277	7,106	9,733	15,979	816	1,887
1986	69,227	1,885	3,786	21,470	..	5,497	114	1,418	7,866	9,241	12,514	803	2,019
1987	67,701	1,838	3,640	22,184	..	5,815	100	1,390	8,469	8,608	9,935	828	2,162
1988	71,553	1,912	3,866	23,249	258	6,200	68	1,415	9,370	8,456	11,102	849	2,342
Per cent change	+5.7	+4.0	+6.2	+4.8	..	+6.6	-32.0	+1.8	+10.6	-1.8	+11.7	+2.5	+8.3
1988 Jan-Oct	58,767	1,546	3,195	19,289	146	5,267	49	1,091	7,756	6,891	8,767	716	1,994
1989 Jan-Oct p	59,361	1,367	3,150	19,934	3,527	5,611	40	1,069	8,400	6,812	8,220	742	2,065
Per cent change	+1.0	-11.6	-1.4	+3.3	(+)	+6.5	-18.4	-2.0	+8.3	-1.1	-6.2	+3.6	+3.6
1988 Aug	5,797	136	370	2,052	23	613	2	72	762	607	703	68	211
Sept	5,971	175	283	2,001	29	602	5	112	814	688	805	70	209
Oct	6,295	108	269	1,962	33	556	7	132	830	727	1,205	72	203
Total	18,063	419	923	6,015	84	1,772	15	316	2,406	2,022	2,713	209	623
1989 Aug	6,016	134	281	2,110	511	656	2	76	859	609	813	76	217
Sept	5,826	135	369	1,991	517	629	4	104	862	610	643	71	223
Oct p	6,402	140	386	2,042	561	595	5	116	902	682	1,056	75	227
Total	18,244	409	1,035	6,142	1,590	1,880	11	297	2,624	1,901	2,512	222	667
Per cent change	+1.0	-2.4	+12.1	+2.1	(+)	+6.1	-26.7	-6.0	+9.1	-6.0	-7.4	+6.2	+7.1

1. Calendar Months. 2. Including other petroleum gases, aviation spirit, wide-cut gasoline, industrial and white spirits, petroleum wax, non-domestic standard burning oil and miscellaneous products. 3. Excluding refinery fuel. 4. Including amounts for petro-chemicals. 5. Now mainly for petro-chemical feedstock. Prior to the September 1986 issue of Energy Trends, Middle Distillate Feedstock was included in the Gas/diesel oil (Other) column.

TABLE 10. Deliveries of petroleum products for inland consumption: energy uses^{1 2}

Thousand tonnes

	Total	Power ³ stations	Gas works	Iron and steel industry	Other industries	Transport ⁴	Domestic	Other ⁵
1984	73,259	20,913	157	866	9,364	33,823	2,139	5,996
1985	61,298	9,721	148	718	8,406	34,464	2,199	5,643
1986	59,864	5,665	164	693	9,000	36,665	2,317	5,360
1987	58,298	4,497	86	628	7,995	38,220	2,211	4,661
1988	61,553	4,392	59	824	8,807	40,621	2,183	4,666
Per cent change	+5.6	-2.3	-31.4	+31.2	+10.2	+6.3	-1.3	+0.1
1988 Jan-Sept	44,892	2,812	44	592	6,276	30,288	1,517	3,363
1989 Jan-Sept p	45,766	2,782	37	657	5,876	31,852	1,477	3,084
Per cent change	+1.9	-1.1	-15.9	+11.0	-6.4	+5.2	-2.6	-8.3
1988 July	4,701	225	4	46	537	3,504	124	260
Aug	4,916	285	3	54	585	3,580	124	285
Sept	5,156	321	4	76	668	3,568	172	347
Total	14,773	831	11	177	1,790	10,652	421	892
1989 July	4,842	338	3	54	434	3,682	95	237
Aug	5,224	403	3	73	556	3,800	128	261
Sept p	4,959	282	4	66	543	3,633	160	272
Total	15,025	1,022	9	193	1,533	11,115	382	770
Per cent change	+1.7	+23.0	-18.2	+9.0	-14.4	+4.3	-9.3	-13.7

1. Calendar Months. 2. Excludes non-energy use. 3. Public supply, railway and transport power stations. 4. Includes coastal shipping and fishing. 5. Mainly public administration, commerce and agriculture.

TABLE 11. Stocks of petroleum¹ at end of period

Thousand tonnes

	Light ² distillates	Kerosene and gas/diesel ³	Fuel oil	Other products ⁴	Total petroleum products	Crude oil and refinery process oils
1984	2,102	3,066	3,953	1,479	10,600	7,168
1985	2,282	3,392	3,657	1,352	10,684	7,395
1986	2,421	3,078	3,888	1,370	10,757	7,053
1987	2,513	3,017	3,603	1,380	10,513	7,242
1988	2,878	3,129	3,396	1,353	10,756	6,017
Per cent change	+14.5	+3.7	-5.7	-2.0	+2.3	-16.9
1988 Aug	2,695	2,998	3,417	1,426	10,535	7,139
Sept	2,656	2,961	3,327	1,415	10,359	7,125
Oct	2,656	2,922	3,465	1,371	10,414	7,094
1989 Aug	2,562	3,067	3,170	1,280	10,079	7,152
Sept	2,453	3,354	3,355	1,301	10,463	7,048
Oct p	2,520	3,148	3,308	1,232	10,208	6,627
Per cent change	-5.1	+7.7	-4.5	-10.1	-2.0	-6.6

1. Stocks held at refineries, terminals and power stations. Stocks in the wholesale distribution system and those held abroad for UK use under approved bilateral agreements are also included. 2. Motor spirit, aviation spirit and aviation wide-cut gasoline. 3. Aviation turbine fuel, burning oil, gas oil, Derv fuel and marine diesel oil. 4. Ethane, propane, butane, other petroleum gases, naphtha (ldf), industrial and white spirits, bitumen, petroleum wax, lubricating oils, petroleum coke and miscellaneous products.

Gas

TABLE 12. Sources of supply and gas sent out by the gas supply system

	Natural gas supply					Gas sent out
	Total into system ¹	Source				
		Indigenous	Imported	Indigenous	Imported	
	Million therms		Percentage of total	Million therms		
1984	17,884	12,893	4,992	72.1	27.9	17,788
1985	19,317	14,314	5,003	74.1	25.9	19,047
1986	19,747	15,064	4,683	76.3	23.7	19,246
1987	20,198	15,783	4,416	78.1	21.9	19,814
1988	19,083	15,186	3,897	79.6	20.4	18,655
Per cent change	-5.5	-3.8	-11.8			-5.8
1988 Jan-Oct	14,675	11,566	3,109	78.8	21.2	14,291
1989 Jan-Oct p	14,163	11,039	3,125	77.9	22.1	13,929
Per cent change	-3.5	-4.6	+0.5			-2.5
1988 Aug	788	612	175	77.8	22.2	685
Sept*	1,228	984	245	80.1	19.9	1,154
Oct	1,343	1,108	236	82.5	17.5	1,306
Total	3,359	2,704	656	80.5	19.5	3,145
1989 Aug	735	542	193	73.7	26.3	663
Sept*	1,089	818	271	75.1	24.9	1,039
Oct p	1,282	974	308	76.0	24.0	1,258
Total	3,106	2,334	772	75.1	24.9	2,960
Per cent change	-7.5	-13.7	+17.7			-5.9

1. Figures differ from Gas sent out because of stock changes and the inclusion of small quantities of Substitute Natural Gas and Town Gas in Gas sent out. They include gas put to storage, but to avoid double counting, exclude gas withdrawn from storage to the system. The figures also differ from total consumption (expressed in coal or oil equivalent in Table 1) because of producers' own use and losses and small quantities not entering the gas supply system.

TABLE 13. Sales by the gas supply system

Million therms

	Total	Power stations ¹	Iron and steel industry	Other industries	Domestic	Other ²
1984	17,305	178	449	5,323	8,933	2,422
1985	18,367	197	449	5,370	9,684	2,667
1986	18,497	75	419	4,853	10,242	2,908
1987	19,373	79	468	5,335	10,500	2,990
1988	18,639	83	449	4,854	10,255	2,997
Per cent change	-3.8	+5.1	-4.1	-9.0	-2.3	+0.2
1987 2nd quarter	3,635	20	111	1,194	1,745	566
3rd quarter	2,449	19	95	1,054	971	310
4th quarter	5,681	21	134	1,452	3,197	877
1988 1st quarter	6,945	21	138	1,524	4,096	1,166
2nd quarter	3,655	20	109	1,127	1,810	590
3rd quarter	2,514	20	89	928	1,128	349
4th quarter	5,523	22	113	1,276	3,221	891
1989 1st quarter	6,355	21	124	1,372	3,766	1,072
2nd quarter (e)	3,810	21	110	1,098	1,920	660
Per cent change ³	+4.2	—	+0.9	-2.5	+6.1	+11.9

1. Public supply and transport power stations. 2. Public administration, commerce and agriculture. 3. Per cent change on the corresponding period of the previous year.

Electricity

TABLE 14. Capacity of, and electricity generated by, industry and transport undertakings in Great Britain¹

	Industry										
	Total	Total industry	Nuclear power stations ²	Petroleum refineries	Iron and steel	Chemicals	Engineering and other metal trades	Food, drink and tobacco	Paper, printing and stationery	Other ³	Transport under- takings
Capacity (MWe) ⁴											
at end of 1986	3,801	3,524	707(e)	453	338	915	507	188	201	215	277
at end of 1987	3,792	3,515	707(e)	456	338	862	505	189	225	233	277
at end of 1988	3,712	3,435	707(e)	421	345	826	500	173	230	233	277
Generation (GWh)											
1986	19,317	18,676	5,074	2,412	1,318	4,470	3,531	481	818	572	641
1987	19,759	19,134	4,956	2,245	1,545	4,741	3,720	459	859	609	625
1988	19,705	19,031	4,589	2,237	1,760	4,620	3,648	491	988	698	674
Per cent change	-0.3	-0.5	-7.4	-0.4	+13.9	-2.6	-1.9	+7.0	+15.0	+14.6	+7.8
1987 4th quarter	5,450	5,284	1,551	528	382	1,121	1,063	239	230	170	166
1988 1st quarter	5,406	5,236	1,438	563	429	1,269	980	111	256	190	170
2nd quarter	4,641	4,478	1,111	464	419	1,087	927	61	244	166	163
3rd quarter	4,348	4,186	897	567	408	1,098	764	56	243	153	162
4th quarter	5,308	5,129	1,143	643	504	1,166	976	263	245	189	179
1989 1st quarter	5,507	5,329	1,406	651	526	1,138	1,005	137	281	185	178
2nd quarter p	4,663	4,503	1,211	578	461	882	909	65	233	164	160
Per cent change ⁵	+0.5	+0.6	+9.0	+24.6	+10.0	-19.0	-1.9	+6.6	-4.5	-1.2	-1.8

1. Based on the Standard Industrial Classification 1980. Figures for 1983 and earlier years are not available on this basis. Excludes electricity generated by commerce, public administration, etc. 2. Generated by UKAEA and British Nuclear Fuels for the public electricity supply system. 3. Including coal mining, gas and water-works. 4. The figures for capacity update the data for 1983 given in the report 'CHP and Electricity Generation in British Industry 1983-1988' (HMSO 1986). 5. Per cent change on the corresponding period of the previous year.

TABLE 15. Fuel used by, and electricity production and availability from the public supply system*

	Fuel used						Electricity generated					
	Total ¹	Coal ^{2 3}	Oil ^{2 4}	Natural gas	Nuclear electricity	Hydro electricity	By steam plant			Own ⁶ use	Electricity supplied	Electricity ⁷ available
							Total ⁵	Nuclear	Other			
Million tonnes coal or coal equivalent						TWh						
United Kingdom												
1984	109.52	53.41	36.23	0.39	17.72	1.75	265.99	49.50	209.12	19.62	246.37	250.76
1985	114.58	73.95	18.06	0.50	20.28	1.79	279.97	56.35	216.26	21.73	258.24	263.23
1986	114.42	82.65	10.34	—	19.38	2.04	282.27	54.01	221.39	21.09	261.18	270.89
1987	114.01	86.18	8.17	—	17.94	1.72	282.70	50.28	226.38	20.81	261.89	279.10
1988	114.80	82.47	9.16	0.01	21.12	2.06	288.54	58.87	222.88	21.58	266.97	285.19
Per cent change	+0.7	-4.3	+12.2	+36.9	+17.7	+20.0	+2.1	+17.1	-1.5	+3.7	+1.9	+2.2
1988 Jan-Oct	92.13	66.45	7.02	—	16.98	1.67	231.50	47.38	178.69	17.49	214.01	227.61
1989 Jan-Oct p	92.84	64.22	6.83	0.01	20.10	1.68	233.74	55.42	173.13	17.13	216.61	231.43
Per cent change	+0.8	-3.4	-2.7	+19.5	+18.4	+0.3	+1.0	+17.0	-3.1	-2.1	+1.2	+1.7
1988 Aug	7.26	4.96	0.36	—	1.82	0.12	18.43	5.06	12.92	1.57	16.86	18.16
Sept*	10.04	7.19	0.60	—	2.04	0.22	25.22	5.67	18.90	1.95	23.27	24.72
Oct	8.95	6.10	0.86	—	1.77	0.22	22.43	4.92	16.92	1.63	20.80	21.99
Total	26.24	18.24	1.82	—	5.63	0.56	66.09	15.66	48.74	5.15	60.93	64.88
1989 Aug	7.42	5.14	0.60	—	1.60	0.08	18.54	4.42	13.87	1.34	17.19	18.51
Sept*	10.03	6.74	0.86	—	2.28	0.15	25.26	6.26	18.53	1.81	23.45	24.96
Oct	8.96	6.11	0.98	—	1.70	0.16	22.23	4.69	17.08	1.56	20.67	22.06
Total	26.41	18.00	2.45	—	5.58	0.38	66.03	15.38	49.47	4.71	61.32	65.52
Per cent change	+0.6	-1.3	+34.5	—	-0.9	-30.9	-0.1	-1.8	+1.5	-8.6	+0.6	+1.0
England & Wales												
1984	93.48	49.87	29.34	0.39	13.78	0.09	227.01	38.76	185.02	16.50	210.51	219.14
1985	98.80	68.07	14.07	0.50	16.05	0.11	242.25	44.87	194.28	18.62	223.63	229.87
1986	99.40	77.33	6.82	—	15.14	0.10	246.90	42.43	202.09	18.46	228.43	236.74
1987	98.56	79.21	5.32	—	13.92	0.12	246.52	39.24	205.14	18.08	228.44	244.61
1988	98.92	77.57	4.90	0.01	16.32	0.11	250.30	45.76	202.34	18.73	231.57	249.81
Per cent change	+0.4	-2.1	-7.8	+36.9	+17.2	-5.9	+1.5	+16.6	-1.4	+3.6	+1.4	+2.1
1988 Jan-Oct	79.47	62.82	3.58	—	12.97	0.09	201.05	36.40	162.88	15.21	185.85	199.83
1989 Jan-Oct p	80.36	61.07	4.31	0.01	14.91	0.07	203.88	41.38	161.04	14.72	189.17	203.25
Per cent change	+1.1	-2.8	+20.3	+19.5	+15.0	-28.1	+1.4	+13.7	-1.1	-3.2	+1.8	+1.7
1988 Aug	6.31	4.79	0.20	—	1.32	0.01	16.08	3.71	12.21	1.35	14.73	16.04
Sept*	8.70	6.72	0.37	—	1.59	0.01	22.03	4.45	17.38	1.70	20.32	21.78
Oct	7.73	5.77	0.55	—	1.40	0.01	19.50	3.88	15.50	1.40	18.10	19.30
Total	22.74	17.28	1.12	—	4.30	0.03	57.61	12.05	45.09	4.45	53.16	57.11
1989 Aug	6.45	4.79	0.42	—	1.24	—	16.22	3.44	12.68	1.20	15.02	16.33
Sept*	8.67	6.34	0.64	—	1.69	—	21.95	4.64	17.16	1.54	20.40	21.92
Oct p	7.69	5.76	0.72	—	1.20	0.01	19.48	3.33	16.02	1.34	18.14	19.38
Total	22.80	16.89	1.77	—	4.12	0.02	57.65	11.41	45.87	4.09	53.56	57.63
Per cent change	+0.3	-2.3	+58.5	—	-4.2	-48.5	+0.1	-5.3	+1.7	-8.2	+0.8	+0.9

1. Including any coke. 2. Including quantities used in the production of steam for sale. 3. See comments on Statistical Calendar in March 1988 edition. 4. Including oil used in gas turbine and diesel plant and for lighting up coal fired boilers. 5. Including generation by gas turbine, diesel and hydro-electric plant. 6. Used in works and for pumping at pumped storage stations. 7. Includes net imports and purchases from outside sources, mainly UKAEA and British Nuclear Fuels. The England & Wales figures include net exchanges with Scotland.

TABLE 16. Sales of electricity by the public supply system

	GWh				
	Total	Iron and steel industry	Other industries	Domestic	Other ¹
1984	229,362	8,040	75,813	84,039	61,470
1985	240,578	7,773	78,510	88,302	65,993
1986	248,093	7,378	79,588	91,826	69,301
1987	256,189	7,775	82,992	93,254	72,168
1988	261,792	8,158	85,972	92,362	75,300
<i>Per cent change</i>	+2.2	+4.9	+3.6	-1.0	+4.3
1987 2nd quarter	57,700	1,953	19,948	19,458	16,341
3rd quarter	54,346	1,751	19,645	17,021	15,929
4th quarter	69,892	2,089	21,708	26,597	19,498
1988 1st quarter	74,029	2,118	22,547	28,582	20,782
2nd quarter	59,975	2,059	21,041	19,694	17,181
3rd quarter	57,002	1,915	20,242	17,804	17,041
4th quarter	70,786	2,066	22,142	26,282	20,296
1989 1st quarter	74,044	2,136	21,889	28,098	21,921
2nd quarter p	62,636	2,119	21,209	20,235	19,073
<i>Per cent change²</i>	+4.4	+2.9	+0.8	+2.7	+11.0

1. Mainly public administration, commerce and agriculture. 2. Per cent change on the corresponding period of the previous year.

Foreign Trade

TABLE 17. Imports and Exports of fuels and related materials¹

	Coal and Other Solid Fuel	Petroleum			Electricity	Total	Coal and Other Solid Fuel	Petroleum		Natural Gas	Electricity	Total
		Crude	Products ²	Natural Gas				Crude	Products ²			
Quantity – Million tonnes of coal or coal equivalent						Value – £ million						
IMPORTS: (cif)												
1984	11.0	42.5	49.2	20.2	—	122.8	651	3,393	4,360	1,307	—	10,311
1985	13.2	45.7	43.1	20.1	—	122.1	716	4,341	4,071	1,511	—	10,639
1986	10.7	54.7	41.3	18.8	1.3	126.9	456	2,440	2,081	1,320	80	6,377
1987	10.1	56.3	35.6	17.3	4.7	124.0	390	2,703	1,881	878	242	6,094
1988 p	12.8	55.8	36.7	15.5	5.5	126.3	484	2,044	1,547	692	268	5,036
Per cent change	+27.6	-0.9	+3.3	-10.7	+15.3	+1.9	+24.1	-24.4	-17.7	-21.1	+10.7	-17.4
1987 4th Quarter	2.9	16.5	9.5	4.1	1.3	34.2	106	761	462	191	60	1,580
1988 1st Quarter p	3.3	13.0	8.6	4.9	1.4	31.2	124	521	369	225	71	1,311
2nd Quarter p	2.9	11.8	9.9	4.5	1.4	30.5	107	446	413	206	68	1,240
3rd Quarter p	3.3	13.2	9.6	2.7	1.4	30.4	127	502	429	121	70	1,250
4th Quarter p	3.3	17.8	8.6	3.4	1.2	34.2	126	575	336	140	59	1,235
1989 1st Quarter p	3.2	15.6	9.1	4.5	1.4	33.8	127	620	381	183	69	1,380
2nd Quarter p	3.4	14.7	9.4	4.3	1.5	33.3	134	729	516	168	81	1,627
3rd Quarter p	2.4	16.0	8.8	2.7	1.6	31.5	105	754	454	109	85	1,507
Per cent change	-27.2	+20.4	-8.8	+0.4	+11.8	+3.7	-17.4	+50.2	+5.8	-10.3	+21.7	+20.6
EXPORTS: (fob)												
1984	2.8	128.9	28.9	—	—	160.6	88	12,173	3,047	—	—	15,308
1985	3.8	135.3	33.4	—	—	172.5	178	13,006	3,611	—	—	16,794
1986	4.1	139.2	35.9	—	—	179.2	190	6,281	2,200	—	—	8,671
1987	2.8	137.0	32.7	—	—	172.6	109	6,765	1,893	—	—	8,767
1988 p	2.2	108.5	32.9	—	—	143.6	96	4,073	1,692	—	—	5,861
Per cent change	-20.7	-20.9	+0.4	—	—	-16.8	-12.0	-39.8	-10.6	—	—	-33.1
1987 4th Quarter	0.8	35.6	8.6	—	—	45.0	30	1,705	487	—	—	2,222
1988 1st Quarter p	0.6	33.7	7.1	—	—	41.4	29	1,330	376	—	—	1,735
2nd Quarter p	0.6	28.0	8.2	—	—	36.9	22	1,078	420	—	—	1,520
3rd Quarter p	0.4	22.5	9.2	—	—	32.1	21	853	468	—	—	1,342
4th Quarter p	0.6	24.2	8.4	—	—	33.2	25	811	428	—	—	1,264
1989 1st Quarter p	0.7	18.4	9.5	—	—	28.6	31	768	493	—	—	1,292
2nd Quarter p	0.5	16.1	8.1	—	—	24.7	20	783	492	—	—	1,296
3rd Quarter p	0.6	17.3	8.5	—	—	26.4	26	803	517	—	—	1,345
Per cent change	+53.0	-23.4	-7.7	—	—	-17.9	+20.7	-5.9	+10.5	—	—	+0.2
NET IMPORTS:												
1984	8.2	-86.4	20.3	20.2	—	-37.7	563	-8,180	1,313	1,307	—	-4,997
1985	9.3	-89.6	9.7	20.1	—	-50.4	538	-8,665	460	1,511	—	-6,155
1986	6.6	-85.4	5.4	18.8	1.3	-52.3	266	-3,841	-119	1,320	80	-2,294
1987	7.3	-80.8	2.8	17.3	4.7	-48.6	281	-4,061	-12	878	242	-2,673
1988 p	10.6	-52.7	3.9	15.5	5.5	-17.3	388	-2,029	-145	692	268	-825
1987 4th Quarter	2.0	-19.3	0.9	4.1	1.3	-11.0	77	-944	-25	191	60	-641
1988 1st Quarter p	2.7	-20.7	1.5	4.9	1.4	-10.2	95	-809	-7	225	71	-424
2nd Quarter p	2.3	-16.3	1.8	4.5	1.4	-6.3	85	-632	-7	206	68	-280
3rd Quarter p	2.9	-9.3	0.4	2.7	1.4	-1.8	106	-351	-39	121	70	-93
4th Quarter p	2.7	-6.4	0.2	3.4	1.2	1.0	101	-237	-93	140	59	-30
1989 1st Quarter p	2.6	-2.8	-0.4	4.4	1.4	5.2	97	-148	-112	183	69	88
2nd Quarter p	2.9	-1.4	1.3	4.3	1.5	8.6	113	-54	23	168	81	331
3rd Quarter p	1.8	-1.3	0.3	2.7	1.6	5.1	79	-48	-63	109	85	162

Prices

TABLE 18. Prices of fuels used by Industry in Great Britain¹

		1987				1988				1989		
Fuel	Size of Consumer	1st Quarter	2nd Quarter	3rd Quarter	4th Quarter	1st Quarter	2nd Quarter	3rd Quarter	4th Quarter	1st Quarter	2nd Quarter	3rd p Quarter
COAL (£ per GJ) ²	Small					2.42	2.50	2.44	2.41	2.53	2.44	2.48
	Medium					1.99	1.99	2.01	1.82	1.76	1.79r	1.80
	Large					1.58	1.56	1.48	1.51	1.53	1.47r	1.43
	average					1.65	1.63	1.57	1.56	1.58	1.54	1.50
	10% decile ³					1.54	1.46	1.46	1.35	1.38	1.42	1.43
	median ³					2.35	2.34	2.34	2.34	2.37	2.30r	2.28
	90% decile ³					2.79	2.80	2.82	2.83	2.84	2.66	2.56
All consumers —	average											
	10% decile ³											
Old basis ⁴ —	average	1.70	1.71	1.78	1.66	1.62	1.58	1.49	1.51	1.49	1.45	1.40
	(£ per tonne) average	47.2	47.5	51.0	46.1	45.0	43.8	41.4	41.9	41.7	40.8r	40.6
HEAVY FUEL OIL (£ per tonne) ⁵	Small					77.3	88.1	80.3	64.7	70.7	79.7	80.6
	Medium					67.3	68.4	63.3	61.8	64.2	72.5r	74.9
	Large					61.4	56.8	56.5	54.9	58.1	68.4r	66.7
	average					65.6	65.0	62.0	58.6	61.9	71.3r	71.4
	10% decile ³					59.0	59.8	57.2	52.2	57.4	65.3r	68.3
	median ³					68.5	70.7	65.6	60.5	65.2	72.5r	74.2
	90% decile ³					104.1	104.4	99.8	91.2	90.4	81.5	81.8
All consumers —	average											
	10% decile ³											
Old basis ⁴ —	average	82.3	80.7	80.0	70.5	57.9	55.0	54.0	53.6	55.7	65.8r	64.4
GAS OIL (£ per tonne) ⁵	Small					127.7	130.8	128.3	122.2	125.1	132.5r	134.9
	Medium					119.0	118.1	113.2	106.4	118.4	122.9r	127.4
	Large					116.2	111.5	104.2	100.9	111.1	115.2r	117.7
	average					116.9	113.0	106.1	102.3	112.6	116.8r	119.6
	10% decile ³					104.2	100.0	100.0	92.8	106.6	109.2r	109.8
	median ³					119.1	116.1	113.2	109.9	118.6	123.1r	127.4
	90% decile ³					144.0	143.2	134.7	136.8	137.5	145.2r	146.5
All consumers —	average											
	10% decile ³											
Old basis ⁴ —	average	134.0	123.3	128.0	122.0	114.0	110.5	105.2	99.4	112.6	115.6r	117.6
ELECTRICITY (Pence per kWh)	Small					5.22	4.78r	4.85r	5.65r	5.71r	4.93r	4.64
	Medium					4.34	3.96	3.97r	4.61r	4.62	4.19r	4.18
	Large					3.07r	2.98r	3.02r	3.14r	3.26r	3.28r	3.16
	average					3.51r	3.33r	3.36r	3.65r	3.74r	3.61r	3.50
	10% decile ³					3.83	3.64r	3.62r	4.11	4.18	3.90	3.92
	median ³					4.88r	4.57r	4.56	5.40r	5.36r	4.80r	4.70
	90% decile ³					6.06r	5.77r	5.86	6.69r	6.68r	6.06r	6.27
All consumers —	average											
	10% decile ³											
Old basis ⁴ —	average	3.07	2.75	2.73	3.01	3.00	2.88	2.91	3.22	3.21	3.23	3.02
GAS (Pence per therm) ⁶	Small					34.62	34.75	35.02	35.43	35.69	35.41r	35.59
	Medium					31.00	30.72	31.12	30.75	30.07	27.48r	27.11
	Large					21.07	20.73	21.12	21.87	20.81	20.00	20.23
	average					22.80	22.26	22.32	23.49	22.93	21.51r	21.25
	10% decile ³					25.00	25.72	26.23	27.70	26.84	26.74r	25.85
	median ³					34.40	34.40	34.40	34.40	34.40	34.25r	33.92
	90% decile ³					37.06	38.55	40.12	39.67	39.19	39.93r	40.91
All consumers —	average											
	10% decile ³											
Old basis ⁴ —	average	22.00	22.04	21.53	22.22	22.19	20.73	21.41	22.39	20.30	19.40r	19.48
MEDIUM FUEL OIL (£ per tonne) ⁵	All consumers — average ⁷									69.4	74.5r	73.3
LIQUEFIED PETROLEUM GASES (£ per tonne)												
All consumers — average ⁷										116.4	113.3r	118.1
HARD COKE (£ per tonne) ⁸												
All consumers — average ⁷										89.7	92.0r	94.4
Realised in new and renewed contracts												
HEAVY FUEL OIL (£ per tonne) ^{5 9}		92.9	90.0	91.5	76.7	65.0	70.7	76.2	63.4	73.6	95.3	100.9
GAS OIL (£ per tonne) ^{5 9}		142.2	128.7	143.0	129.5	118.9	117.6	118.6	113.5	126.7	131.7	140.8
GAS (Pence per therm) ¹⁰		27.8	28.0	27.8	27.4	25.8	24.8	25.0	24.9	24.8	24.5	24.7

1. Average prices paid by respondents to a Department of Energy survey of manufacturing sites. There is a break after 1987. Thereafter the sample covers some 1200 sites (previously 900) including small and medium sized purchasers. The average price for each size of consumer is obtained by dividing the total quantity of purchases, for each fuel, into their total value. Prices vary widely around the average values shown (see footnote 3). From 1988 purchases of fuels used as raw materials in manufacturing are excluded. For further details, including definitions of 'small', 'medium', and 'large' consumers, see the October 1989 edition. 2. 1 GJ (Gigajoule) = 9.4781 therms. 3. The 10% decile is the point within the complete range of prices below which the bottom 10% of those prices fall. Similarly the 90% decile is the point above which the top 10% of the prices occur. The median is the midway point. Thus, these values show the spread of prices paid. The deciles and the median are calculated by giving equal 'weight' to each purchaser, whereas the average prices, for each size-band and all consumers are given 'weight' according to the quantity purchased. 4. Basis for price series published in Energy Trends prior to 1989. 5. Oil product prices include hydrocarbon oil duty. 6. From 1988 covers all supplies of natural gas including, for example, those purchased direct from onshore/offshore gasfields. Previously only gas purchased from the public supply was covered. Respondents purchasing more than one type of supply (tariff, firm contract and interruptible contract) are treated as separate entities in respect of each type of supply. 7. Data prior to 1989 are not available. No further details of prices can be given owing to the small number of repondents purchasing this fuel. 8. Excludes breeze and blast furnace supplies. 9. Derived from prices reported by ten main oil marketing companies and relate to average net prices realised on medium sized new contracts or contracts renewed at a changed price. 10. British Gas plc estimates of the average price of new and renewed contracts in the quarter, both firm and interruptible supplies. r = revised.

See note on opposite page

TABLE 19. Fuel price indices for the domestic sector¹

1985=100

	Coal and Coke	Gas	Electricity	Heating Oils ²	Fuel and Light	Petrol and Oil	Fuel, Light, Petrol and Oil	Retail Price Index — All items excluding fuels
Current fuel price index numbers								
1984	94	96	97	92	96	94	95	94
1985	100	100	100	100	100	100	100	100
1986	103	102	102	86	101	87	95	104
1987	104	101	102	80	101	88	96	109
1988	105	102	107	72	103	87	97	115
Per cent change	+1	+1	+5	-9	+2	-1	+1	+5
1988 3rd quarter	102	104	110	71	105	88	98	115
4th quarter	107	104	110	70	105	87	98	118
1989 1st quarter	108	104	110	73	106	88	99	120
2nd quarter	104	106	114	76	108	96	103	123
3rd quarter	105	107	118	75	110	94	104	124
Per cent change ³	+2	+3	+7	+6	+5	+7	+6	+8
Deflated ⁴ fuel price index numbers								
1984	100	102	103	98	102	100	101	
1985	100	100	100	100	100	100	100	
1986	99	98	98	82	97	83	91	
1987	95	93	93	73	92	81	88	
1988	92	89	94	63	90	76	84	
Per cent change	-4	-4	—	-13	-3	-6	-4	
1988 3rd quarter	89	90	96	61	91	76	85	
4th quarter	91	88	94	60	89	74	83	
1989 1st quarter	90	87	92	61	88	74	82	
2nd quarter	85	86	93	62	88	78	84	
3rd quarter	84	86	95	60	89	76	84	
Per cent change ³	-5	-4	-1	-2	-3	-1(r)	-2	

1. Index numbers shown represent the average for the period specified. 2. Bottled gas and oil fuel. (Paraffin was included up to the 4th quarter of 1985). 3. Per cent change on corresponding period of the previous year. 4. Obtained by deflating the current fuel price index by the Retail Price Index series above. r = revised

TABLE 20. Fuel price indices for the industrial sector¹

1985=100

	Coal ²	Heavy Fuel Oil ²	Gas ³	Electricity ³	Total Fuel	Producer Price Index of Materials	
Current fuel price index numbers							
1984	96	99	94	96	96	100	
1985	100	100	100	100	100	100	
1986	95	48	87	101	83	94	
1987	91	51	82	98	81	97	
1988	83	36	78	103	78	102	
Per cent change	-9	-30	-5	+6	-4	+4	
				Actual	Seasonally adj.		
1988 3rd quarter	79	36	74	98	105	74	103
4th quarter	80	35	79	113	106	81	103
1989 1st quarter	81	37	80	112	105	82	106
2nd quarter	79	43(r)	75(r)	104	111(p)	79(r)	109
3rd quarter	77	43	72	105	113(p)	78	107
Per cent change ⁴	-3	+21	-4	+7	+7(p)	+5	+4
Deflated ⁵ fuel price index numbers							
1984	97	99	94	97	97		
1985	100	100	100	100	100		
1986	102	51	93	108	89		
1987	94	53	84	101	83		
1988	81	36	77	102	76		
Per cent change	-13	-32	-9	+1	-8		
				Actual	Seasonally adj.		
1988 3rd quarter	77	35	72	95	102	72	
4th quarter	78	34	76	110	102	79	
1989 1st quarter	77	35	76	106	100	77(r)	
2nd quarter	73	40(r)	69(r)	96	103(p)	72(r)	
3rd quarter	72	40	67	98	105(p)	73	
Per cent change ⁴	-7	+16	-8	+3	+2	+1	

1. Index numbers shown represent the average for the period specified. 2. Indices based on a survey of the prices of fuels delivered to industrial consumers as shown in table 18. From 1989 onwards the average price for all consumers is used, prior to that the 'old basis' price covering larger consumers only was used. 3. Indices based on the average unit value of sales to industrial consumers. 4. Per cent change on the corresponding period of the previous year. 5. Obtained by deflating the current fuel price index by the Producer Price Index series above.

Table 18. Supplementary Note

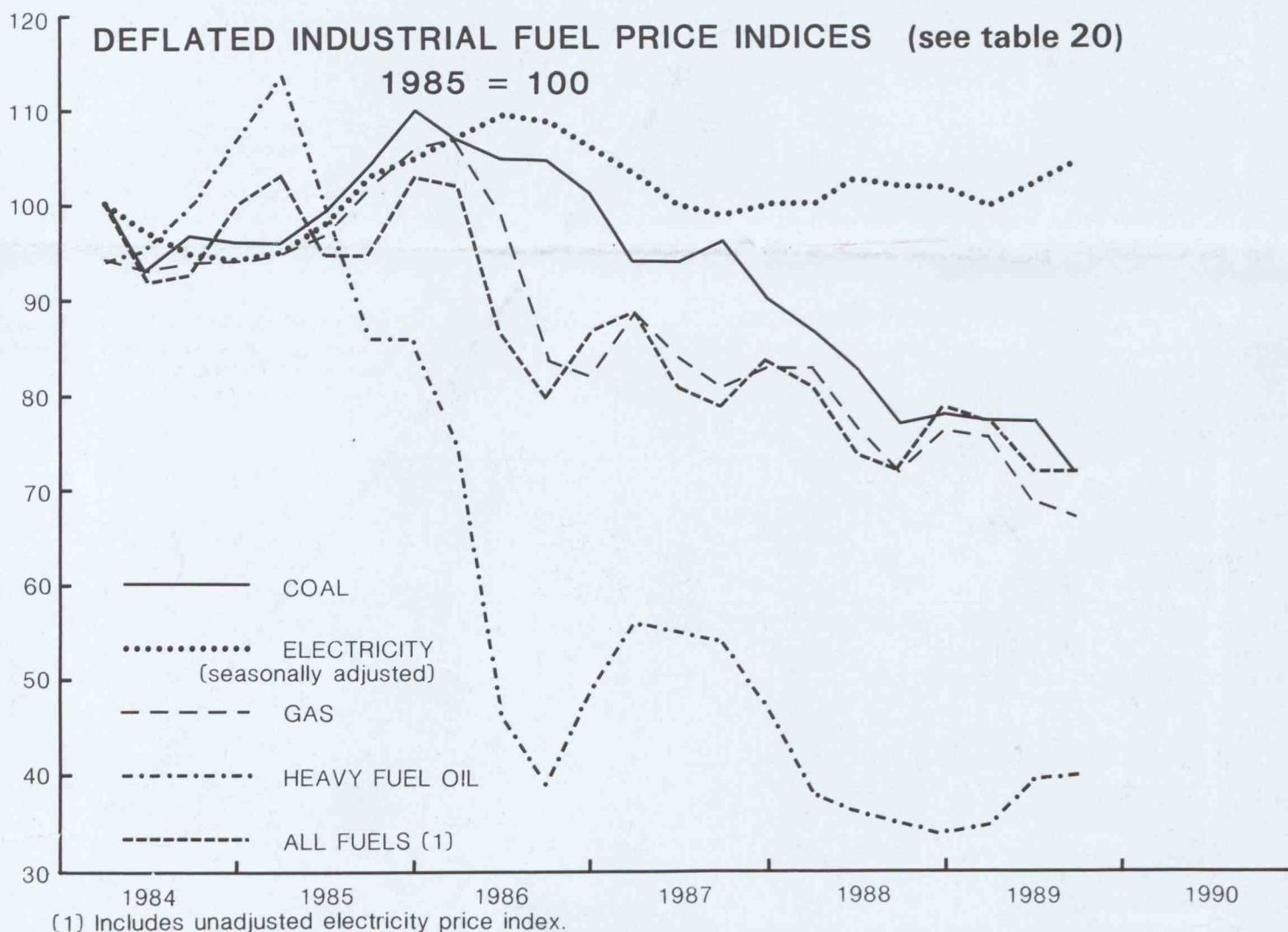
It has recently been decided that the old basis prices shown in this table will not be continued beyond the end of 1989. The availability of two years overlapping data should enable users to make comparisons between the old and new series.

TABLE 21. Typical Retail Prices of Petroleum Products

Pence per litre¹

	Motor Spirit ²			Derv ²	Standard Burning Oil ⁴	Gas
	2 star	4 star	Unleaded ³			
1984 January	39.44	40.35	—	36.78	19.84	20.31
1985 January	40.71	41.54	—	40.59	21.60	22.62
1986 January	40.81	41.63	—	41.13	19.48	19.47
1987 January	37.57	38.42	..	35.00	13.52	14.70
1988 January	35.98	36.79	..	33.94	11.97	12.29
1988 August	37.13	37.93	..	34.25	10.43	10.73
September	36.82	37.62	..	33.88	10.35	10.49
October	36.67	37.46	..	33.82	9.97	9.83
November	36.51	37.31	..	33.72	9.85	10.24
December	36.39	37.19	..	33.78	11.06	10.74
1989 January	36.36	37.14	36.02	34.17	11.41	11.15
February	37.56	38.30	36.88	35.03	10.83	10.49
March	37.95	38.85	37.30	35.09	11.40	10.90
April	41.01	41.14	39.09	36.08	11.45	10.83
May	42.81	42.83	40.81	36.06	11.41	10.81
June	42.68	42.70	40.74	35.93	11.48	11.26
July	..	41.49	39.26	35.87	11.00	10.91
August	..	39.92	37.40	35.70	11.48	11.19
September	..	40.79	38.19	36.00	12.33	11.89
October	..	40.89	38.30	37.33	13.13	12.50

1. To convert the price per litre to the price per gallon multiply by 4.54609. 2. These approximate estimates are generally representative of prices paid at the pump on or about the 15th of the month. Estimates are based on information provided by oil companies. Until June 1989 the prices for unleaded motor spirit are based on information from fewer companies and are therefore less reliable than the other estimates given. 3. Price for premium unleaded with minimum octane rating of 95. 4. These estimates are based on information provided by marketing companies for deliveries of 2,000 litres.



Enquiries about this bulletin should be addressed to: Economics & Statistics Division, Room 3.3.26

Department of Energy, 1 Palace Street, London SW1E 5HE. (tel: 01-238 3606)

Subscription rates for 1990 are UK £14.00; Europe (including Eire) £18; other overseas £25 (airmail) or £18 (surface mail)

© Crown Copyright. Reproduction of information contained herein is prohibited without prior written permission.
The Department of Energy reserves the right to alter or discontinue the text of or any table in this bulletin without further notice.

CONFIDENTIAL



file Mo
c.d Coal

10 DOWNING STREET

LONDON SW1A 2AA

From the Private Secretary

2 February 1990

COAL AND POWER STATION STATISTICS

Thank you for your letter of 17 January about the proposed future arrangements for coal and power station statistics. I apologise for not replying before.

I am generally content with your proposals which seem a sensible response to the new position following privatisation. But I think it is important to have in hand the possibility you mention of asking the electricity industry to supply statistics on a weekly basis if the situation warranted it. So I am pleased to note the warning you propose to give to the industry to this effect.

I am copying this letter to Sonia Phippard (Cabinet Office).

PAUL GRAY

John Neilson, Esq.,
Department of Energy.

CONFIDENTIAL

h